

# NBEAL2 Rabbit pAb

Catalog No.: A15797

## Basic Information

### Observed MW

302kDa

### Calculated MW

303kDa

### Category

Primary antibody

### Applications

ELISA, WB

### Cross-Reactivity

Human

## Background

The protein encoded by this gene contains a beige and Chediak-Higashi (BEACH) domain and multiple WD40 domains, and may play a role in megakaryocyte alpha-granule biogenesis. Mutations in this gene are a cause of gray platelet syndrome.

## Recommended Dilutions

WB 1:500 - 1:2000

## Immunogen Information

### Gene ID

23218

### Swiss Prot

Q6ZNJ1

### Immunogen

Recombinant fusion protein containing a sequence corresponding to amino acids 1800-2100 of human NBEAL2 (NP\_055990.1).

### Synonyms

GPS; BDPLT4; NBEAL2

## Contact

 | 400-999-6126

 | [cn.market@abclonal.com.cn](mailto:cn.market@abclonal.com.cn)

 | [www.abclonal.com.cn](http://www.abclonal.com.cn)

## Product Information

### Source

Rabbit

### Isotype

IgG

### Purification

Affinity purification

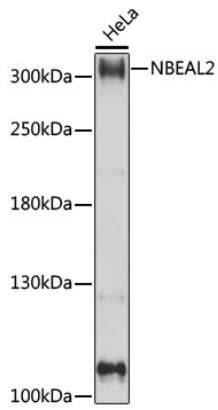
### Storage

Store at -20°C. Avoid freeze / thaw cycles.

Buffer: PBS with 0.01% thimerosal, 50% glycerol, pH7.3.

## Validation Data

---



Western blot analysis of lysates from HeLa cells, using NBEAL2 Rabbit pAb (A15797) at 1:1000 dilution.  
Secondary antibody: HRP Goat Anti-Rabbit IgG (H+L) (AS014) at 1:10000 dilution.  
Lysates/proteins: 25µg per lane.  
Blocking buffer: 3% nonfat dry milk in TBST.  
Detection: ECL Basic Kit (RM00020).  
Exposure time: 5s.