

DICER1 Rabbit pAb

Catalog No.: A15799 **1 Publications**

Basic Information

Observed MW

250kDa

Calculated MW

219kDa

Category

Primary antibody

Applications

ELISA, WB, IF/ICC

Cross-Reactivity

Human

Background

This gene encodes a protein possessing an RNA helicase motif containing a DEXH box in its amino terminus and an RNA motif in the carboxy terminus. The encoded protein functions as a ribonuclease and is required by the RNA interference and small temporal RNA (stRNA) pathways to produce the active small RNA component that represses gene expression. This protein also acts as a strong antiviral agent with activity against RNA viruses, including the Zika and SARS-CoV-2 viruses. Alternative splicing results in multiple transcript variants.

Recommended Dilutions

WB 1:500 - 1:1000

IF/ICC 1:50 - 1:200

Immunogen Information

Gene ID

23405

Swiss Prot

Q9UPY3

Immunogen

A synthetic peptide corresponding to a sequence within amino acids 1100-1200 of human DICER1 (NP_001258211.1).

Synonyms

DCR1; GLOW; MNG1; aviD; Dicer; HERNA; RMSE2; Dicer1e; K12H4.8-LIKE; DICER1

Contact

☎ | 400-999-6126

✉ | cn.market@abclonal.com.cn

🌐 | www.abclonal.com.cn

Product Information

Source

Rabbit

Isotype

IgG

Purification

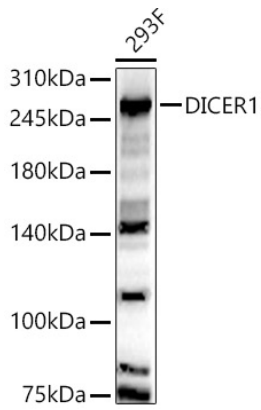
Affinity purification

Storage

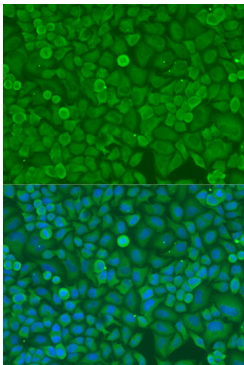
Store at -20°C. Avoid freeze / thaw cycles.

Buffer: PBS with 0.05% proclin300, 50% glycerol, pH7.3.

Validation Data



Western blot analysis of 293F, using DICER1 antibody (A15799) at 1:900 dilution.
Secondary antibody: HRP Goat Anti-Rabbit IgG (H+L) (AS014) at 1:10000 dilution.
Lysates/proteins: 25µg per lane.
Blocking buffer: 3% nonfat dry milk in TBST.
Detection: ECL Basic Kit (RM00020).
Exposure time: 180s.



Immunofluorescence analysis of U2OS cells using DICER1 antibody (A15799) at dilution of 1:100. Blue: DAPI for nuclear staining.