

# SF3B1 Rabbit pAb

Catalog No.: A15801 **1 Publications**

## Basic Information

### Observed MW

150kDa

### Calculated MW

146kDa

### Category

Primary antibody

### Applications

ELISA, WB, IF/ICC

### Cross-Reactivity

Human, Mouse, Rat

## Background

This gene encodes subunit 1 of the splicing factor 3b protein complex. Splicing factor 3b, together with splicing factor 3a and a 12S RNA unit, forms the U2 small nuclear ribonucleoproteins complex (U2 snRNP). The splicing factor 3b/3a complex binds pre-mRNA upstream of the intron's branch site in a sequence independent manner and may anchor the U2 snRNP to the pre-mRNA. Splicing factor 3b is also a component of the minor U12-type spliceosome. The carboxy-terminal two-thirds of subunit 1 have 22 non-identical, tandem HEAT repeats that form rod-like, helical structures. Alternative splicing results in multiple transcript variants encoding different isoforms.

## Recommended Dilutions

<b>WB</b>	1:500 - 1:2000
<b>IF/ICC</b>	1:50 - 1:200

## Immunogen Information

### Gene ID

23451

### Swiss Prot

O75533

### Immunogen

Recombinant fusion protein containing a sequence corresponding to amino acids 1-144 of human SF3B1 (NP\_001005526.1).

### Synonyms

MDS; PRP10; Hsh155; PRPF10; SAP155; SF3b155; SF3B1

## Contact

☎ | 400-999-6126

✉ | [cn.market@abclonal.com.cn](mailto:cn.market@abclonal.com.cn)

🌐 | [www.abclonal.com.cn](http://www.abclonal.com.cn)

## Product Information

### Source

Rabbit

### Isotype

IgG

### Purification

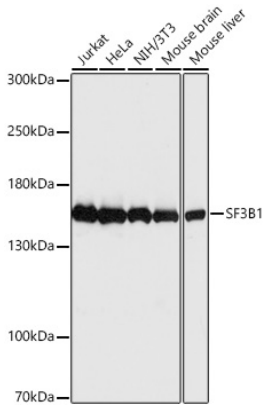
Affinity purification

### Storage

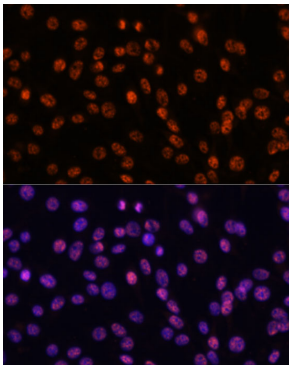
Store at -20°C. Avoid freeze / thaw cycles.

Buffer: PBS with 0.01% thimerosal, 50% glycerol, pH7.3.

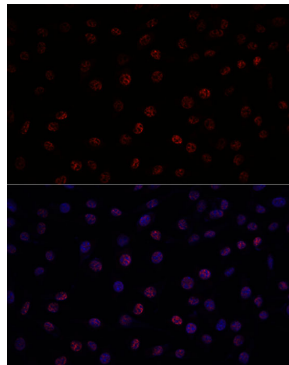
## Validation Data



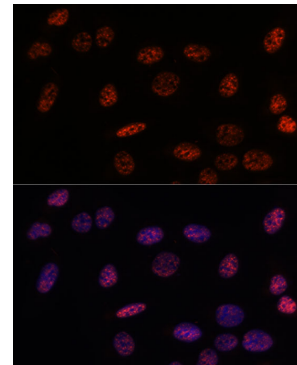
Western blot analysis of various lysates using SF3B1 Rabbit pAb (A15801) at 1:1000 dilution incubated overnight at 4°C.  
Secondary antibody: HRP-conjugated Goat anti-Rabbit IgG (H+L) (AS014) at 1:10000 dilution.  
Lysates/proteins: 25 µg per lane.  
Blocking buffer: 3% nonfat dry milk in TBST.  
Detection: ECL Basic Kit (RM00020).  
Exposure time: 30s.



Immunofluorescence analysis of C6 using SF3B1 Rabbit pAb (A15801) at dilution of d100 (40x lens). Blue: DAPI for nuclear staining.



Immunofluorescence analysis of L929 using SF3B1 Rabbit pAb (A15801) at dilution of d100 (40x lens). Blue: DAPI for nuclear staining.



Immunofluorescence analysis of U-2OS using SF3B1 Rabbit pAb (A15801) at dilution of d100 (40x lens). Blue: DAPI for nuclear staining.