

# RLIM Rabbit pAb

Catalog No.: A15837

## Basic Information

### Observed MW

75kDa

### Calculated MW

69kDa

### Category

Primary antibody

### Applications

ELISA, WB

### Cross-Reactivity

Human, Mouse

## Background

The protein encoded by this gene is a RING-H2 zinc finger protein. It has been shown to be an E3 ubiquitin protein ligase that targets LIM domain binding 1 (LDB1/CLIM), and causes proteasome-dependent degradation of LDB1. This protein and LDB1 are co-repressors of LHX1/LIM-1, a homeodomain transcription factor. Multiple alternatively spliced variants, encoding the same protein, have been identified.

## Recommended Dilutions

WB 1:500 - 1:2000

## Immunogen Information

### Gene ID

51132

### Swiss Prot

Q9NVW2

### Immunogen

Recombinant fusion protein containing a sequence corresponding to amino acids 535-624 of human RLIM (NP\_057204.2).

### Synonyms

MRX61; RNF12; TOKAS; NY-REN-43; RLIM

## Contact

 | 400-999-6126

 | [cn.market@abclonal.com.cn](mailto:cn.market@abclonal.com.cn)

 | [www.abclonal.com.cn](http://www.abclonal.com.cn)

## Product Information

### Source

Rabbit

### Isotype

IgG

### Purification

Affinity purification

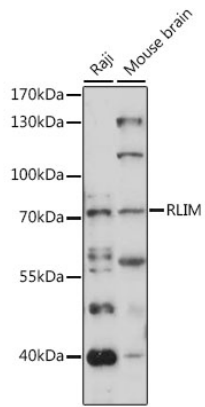
### Storage

Store at -20°C. Avoid freeze / thaw cycles.

Buffer: PBS with 0.01% thimerosal, 50% glycerol, pH7.3.

## Validation Data

---



Western blot analysis of various lysates using RLIM Rabbit pAb (A15837) at 1:1000 dilution.  
Secondary antibody: HRP Goat Anti-Rabbit IgG (H+L) (AS014) at 1:10000 dilution.  
Lysates/proteins: 25 $\mu$ g per lane.  
Blocking buffer: 3% nonfat dry milk in TBST.  
Detection: ECL Basic Kit (RM00020).  
Exposure time: 150s.