

SCLY Rabbit pAb

Catalog No.: A15842 **1 Publications**

Basic Information

Observed MW

48kDa

Calculated MW

48kDa

Category

Primary antibody

Applications

ELISA, WB

Cross-Reactivity

Human, Mouse, Rat

Background

Selenocysteine lyase (SCLY; EC 4.4.1.16) catalyzes the pyridoxal 5-prime phosphate-dependent conversion of L-selenocysteine to L-alanine and elemental selenium (Mihara et al., 2000 [PubMed 10692412]).

Recommended Dilutions

WB 1:500 - 1:2000

Immunogen Information

Gene ID

51540

Swiss Prot

Q96115

Immunogen

Recombinant fusion protein containing a sequence corresponding to amino acids 284-453 of human SCLY (NP_057594.4).

Synonyms

SCL; hSCL; SCLY

Contact

☎ | 400-999-6126

✉ | cn.market@abclonal.com.cn

🌐 | www.abclonal.com.cn

Product Information

Source

Rabbit

Isotype

IgG

Purification

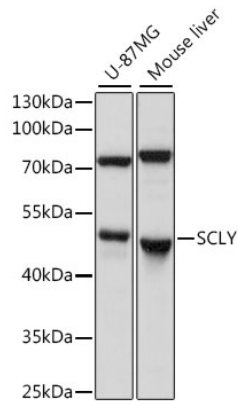
Affinity purification

Storage

Store at -20°C. Avoid freeze / thaw cycles.

Buffer: PBS with 0.01% thimerosal, 50% glycerol, pH7.3.

Validation Data



Western blot analysis of various lysates using SCLY Rabbit pAb (A15842) at 1:1000 dilution.
Secondary antibody: HRP Goat Anti-Rabbit IgG (H+L) (AS014) at 1:10000 dilution.
Lysates/proteins: 25µg per lane.
Blocking buffer: 3% nonfat dry milk in TBST.
Detection: ECL Basic Kit (RM00020).
Exposure time: 30s.