

TPCN1 Rabbit pAb

Catalog No.: A15847 **1 Publications**

Basic Information

Observed MW

94kDa

Calculated MW

94kDa

Category

Primary antibody

Applications

ELISA, WB

Cross-Reactivity

Mouse, Rat

Background

Voltage-gated Ca²⁺ and Na⁺ channels have 4 homologous domains, each containing 6 transmembrane segments, S1 to S6. TPCN1 is similar to these channels, but it has only 2 domains containing S1 to S6 (Ishibashi et al., 2000 [PubMed 10753632]).

Recommended Dilutions

WB 1:500 - 1:2000

Immunogen Information

Gene ID

53373

Swiss Prot

Q9ULQ1

Immunogen

Recombinant fusion protein containing a sequence corresponding to amino acids 692-816 of human TPCN1 (NP_060371.2).

Synonyms

TPC1; TPCN1

Contact

 | 400-999-6126

 | cn.market@abclonal.com.cn

 | www.abclonal.com.cn

Product Information

Source

Rabbit

Isotype

IgG

Purification

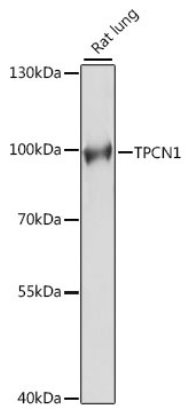
Affinity purification

Storage

Store at -20°C. Avoid freeze / thaw cycles.

Buffer: PBS with 0.01% thimerosal, 50% glycerol, pH7.3.

Validation Data



Western blot analysis of lysates from rat lung, using TPCN1 Rabbit pAb (A15847) at 1:1000 dilution.
Secondary antibody: HRP Goat Anti-Rabbit IgG (H+L) (AS014) at 1:10000 dilution.
Lysates/proteins: 25µg per lane.
Blocking buffer: 3% nonfat dry milk in TBST.
Detection: ECL Basic Kit (RM00020).
Exposure time: 5s.