

# Renin Rabbit pAb

Catalog No.: A1585

1 Publications

## Basic Information

### Observed MW

46kDa

### Calculated MW

45kDa

### Category

Primary antibody

### Applications

WB,IHC-P,ELISA

### Cross-Reactivity

Human, Mouse, Rat

## Background

This gene encodes renin, an aspartic protease that is secreted by the kidneys. Renin is a part of the renin-angiotensin-aldosterone system involved in regulation of blood pressure, and electrolyte balance. This enzyme catalyzes the first step in the activation pathway of angiotensinogen by cleaving angiotensinogen to form angiotensin I, which is then converted to angiotensin II by angiotensin I converting enzyme. This cascade can result in aldosterone release, narrowing of blood vessels, and increase in blood pressure as angiotensin II is a vasoconstrictive peptide. Transcript variants that encode different protein isoforms and that arise from alternative splicing and the use of alternative promoters have been described, but their full-length nature has not been determined. Mutations in this gene have been shown to cause hyperuricemic nephropathy familial juvenile 2, familial hyperproreninemia, and renal tubular dysgenesis.

## Recommended Dilutions

<b>WB</b>	1:500 - 1:1000
-----------	----------------

<b>IHC-P</b>	1:100 - 1:200
--------------	---------------

<b>ELISA</b>	Recommended starting concentration is 1 µg/mL. Please optimize the concentration based on your specific assay requirements.
--------------	---

## Immunogen Information

### Gene ID

5972

### Swiss Prot

P00797

### Immunogen

Recombinant protein (or fragment). This information is considered to be commercially sensitive.

### Synonyms

RTD; HNFJ2; ADTKD4; Renin

## Contact

		400-999-6126
--	--	--------------

		cn.market@abclonal.com.cn
--	--	---------------------------

		www.abclonal.com.cn
--	--	---------------------

## Product Information

### Source

Rabbit

### Isotype

IgG

### Purification

Affinity purification

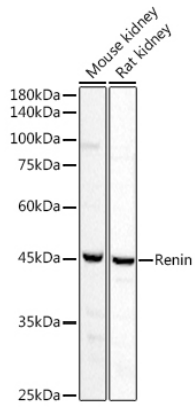
### Storage

Store at -20°C. Avoid freeze / thaw cycles.

Buffer: PBS containing 50% glycerol, preserved with proclin300 or sodium azide (as specified on the Certificate of Analysis), pH 7.3.

## Validation Data

---



Western blot analysis of various lysates using Renin Rabbit pAb (A1585) at 1:1000 dilution.  
Secondary antibody: HRP-conjugated Goat anti-Rabbit IgG (H+L) (AS014) at 1:10000 dilution.  
Lysates/proteins: 25µg per lane.  
Blocking buffer: 3% nonfat dry milk in TBST.  
Detection: ECL Basic Kit (RM00020).  
Exposure time: 10s.