

MAP7D1 Rabbit pAb

Catalog No.: A15862

Basic Information

Observed MW

110kDa

Calculated MW

93kDa

Category

Primary antibody

Applications

ELISA, WB

Cross-Reactivity

Human, Mouse

Background

Predicted to be involved in microtubule cytoskeleton organization. Located in cytosol and microtubule cytoskeleton.

Recommended Dilutions

WB 1:500 - 1:2000

Immunogen Information

Gene ID

55700

Swiss Prot

Q3KQU3

Immunogen

Recombinant fusion protein containing a sequence corresponding to amino acids 200-460 of human MAP7D1 (NP_060537.3).

Synonyms

RPRC1; PARCC1; MAP7D1

Contact

☎ | 400-999-6126

✉ | cn.market@abclonal.com.cn

🌐 | www.abclonal.com.cn

Product Information

Source

Rabbit

Isotype

IgG

Purification

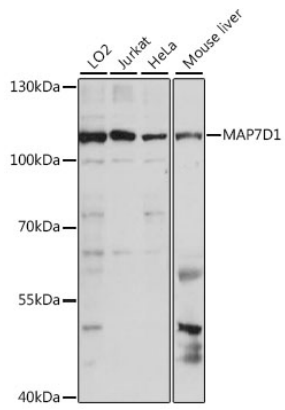
Affinity purification

Storage

Store at -20°C. Avoid freeze / thaw cycles.

Buffer: PBS with 0.01% thimerosal, 50% glycerol, pH7.3.

Validation Data



Western blot analysis of various lysates using MAP7D1 Rabbit pAb (A15862) at 1:1000 dilution.
Secondary antibody: HRP Goat Anti-Rabbit IgG (H+L) (AS014) at 1:10000 dilution.
Lysates/proteins: 25µg per lane.
Blocking buffer: 3% nonfat dry milk in TBST.
Detection: ECL Basic Kit (RM00020).
Exposure time: 10s.