

# ZFP64 Rabbit pAb

Catalog No.: A15863

## Basic Information

### Observed MW

75kDa

### Calculated MW

46kDa/48kDa/68kDa/72kDa/74kDa

### Category

Primary antibody

### Applications

WB,ELISA

### Cross-Reactivity

Human, Mouse

## Background

Predicted to enable DNA binding activity and metal ion binding activity. Predicted to be involved in positive regulation of cytokine production and positive regulation of transcription by RNA polymerase II. Predicted to act upstream of or within positive regulation of mRNA splicing, via spliceosome. Predicted to be active in nucleus.

## Recommended Dilutions

**WB** 1:500 - 1:2000

**ELISA** Recommended starting concentration is 1 µg/mL. Please optimize the concentration based on your specific assay requirements.

## Immunogen Information

### Gene ID

55734

### Swiss Prot

Q9NPA5,Q9NTW7

### Immunogen

Recombinant protein (or fragment). This information is considered to be commercially sensitive.

### Synonyms

ZNF338; ZFP64

## Contact

☎ | 400-999-6126

✉ | [cn.market@abclonal.com.cn](mailto:cn.market@abclonal.com.cn)

🌐 | [www.abclonal.com.cn](http://www.abclonal.com.cn)

## Product Information

### Source

Rabbit

### Isotype

IgG

### Purification

Affinity purification

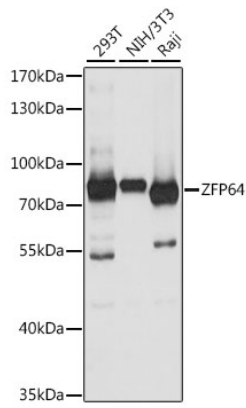
### Storage

Store at -20°C. Avoid freeze / thaw cycles.

Buffer: PBS with 0.01% thimerosal, 50% glycerol, pH7.3.

## Validation Data

---



Western blot analysis of various lysates using ZFP64 Rabbit pAb (A15863) at 1:1000 dilution.  
Secondary antibody: HRP-conjugated Goat anti-Rabbit IgG (H+L) (AS014) at 1:10000 dilution.  
Lysates/proteins: 25 $\mu$ g per lane.  
Blocking buffer: 3% nonfat dry milk in TBST.  
Detection: ECL Basic Kit (RM00020).  
Exposure time: 10s.