

STAMBPL1 Rabbit pAb

Catalog No.: A15877 **1 Publications**

Basic Information

Observed MW

50kDa

Calculated MW

50kDa

Category

Primary antibody

Applications

ELISA, WB

Cross-Reactivity

Mouse, Rat

Background

Predicted to enable Lys63-specific deubiquitinase activity and thiol-dependent deubiquitinase. Predicted to be involved in protein K63-linked deubiquitination. Located in membrane.

Recommended Dilutions

WB 1:500 - 1:2000

Immunogen Information

Gene ID

57559

Swiss Prot

Q96FJ0

Immunogen

Recombinant fusion protein containing a sequence corresponding to amino acids 120-250 of human STAMBPL1 (NP_065850.1).

Synonyms

AMSH-FP; AMSH-LP; ALMalpha; bA399019.2; STAMBPL1

Contact

☎ | 400-999-6126

✉ | cn.market@abclonal.com.cn

🌐 | www.abclonal.com.cn

Product Information

Source

Rabbit

Isotype

IgG

Purification

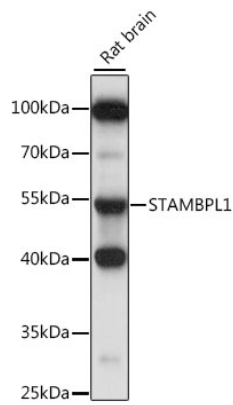
Affinity purification

Storage

Store at -20°C. Avoid freeze / thaw cycles.

Buffer: PBS with 0.01% thimerosal, 50% glycerol, pH7.3.

Validation Data



Western blot analysis of lysates from rat brain, using STAMBPL1 Rabbit pAb (A15877) at 1:1000 dilution.
Secondary antibody: HRP Goat Anti-Rabbit IgG (H+L) (AS014) at 1:10000 dilution.
Lysates/proteins: 25µg per lane.
Blocking buffer: 3% nonfat dry milk in TBST.
Detection: ECL Basic Kit (RM00020).
Exposure time: 30s.