

CERK Rabbit pAb

Catalog No.: A15889

Basic Information

Observed MW

60kDa

Calculated MW

60kDa

Category

Primary antibody

Applications

ELISA, WB

Cross-Reactivity

Human, Mouse, Rat

Background

CERK converts ceramide to ceramide 1-phosphate (C1P), a sphingolipid metabolite. Both CERK and C1P have been implicated in various cellular processes, including proliferation, apoptosis, phagocytosis, and inflammation (Kim et al., 2006 [PubMed 16488390]).

Recommended Dilutions

WB 1:500 - 1:2000

Immunogen Information

Gene ID

64781

Swiss Prot

Q8TCTO

Immunogen

A synthetic peptide corresponding to a sequence within amino acids 400 to the C-terminus of human CERK (NP_073603.2).

Synonyms

LK4; hCERK; dA59H18.2; dA59H18.3; CERK

Contact

☎ | 400-999-6126

✉ | cn.market@abclonal.com.cn

🌐 | www.abclonal.com.cn

Product Information

Source

Rabbit

Isotype

IgG

Purification

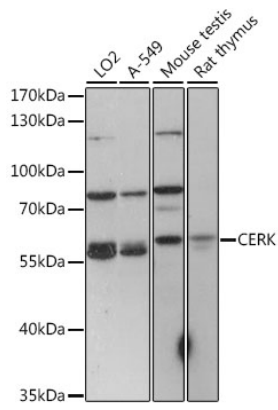
Affinity purification

Storage

Store at -20°C. Avoid freeze / thaw cycles.

Buffer: PBS with 0.01% thimerosal, 50% glycerol, pH7.3.

Validation Data



Western blot analysis of various lysates using CERK Rabbit pAb (A15889) at 1:1000 dilution.
Secondary antibody: HRP Goat Anti-Rabbit IgG (H+L) (AS014) at 1:10000 dilution.
Lysates/proteins: 25µg per lane.
Blocking buffer: 3% nonfat dry milk in TBST.
Detection: ECL Basic Kit (RM00020).
Exposure time: 60s.