

METTL16 Rabbit pAb

Catalog No.: A15894 **5 Publications**

Basic Information

Observed MW

78 kDa

Calculated MW

64 kDa

Category

Primary antibody

Applications

WB,IP,IF/ICC,IHC-P,ELISA

Cross-Reactivity

Human

Background

Enables RNA binding activity and RNA methyltransferase activity. Involved in RNA modification and regulation of mRNA metabolic process. Located in cytoplasm and nucleus.

Recommended Dilutions

WB	1:1000 - 1:5000
IP	0.5µg-4µg antibody for 200µg-400µg extracts of whole cells
IF/ICC	1:50 - 1:200
IHC-P	1:50 - 1:200
ELISA	Recommended starting concentration is 1 µg/mL. Please optimize the concentration based on your specific assay requirements.

Contact

 | 400-999-6126

 | cn.market@abclonal.com.cn

 | www.abclonal.com.cn

Immunogen Information

Gene ID

79066

Swiss Prot

Q86W50

Immunogen

Recombinant protein (or fragment). This information is considered to be commercially sensitive.

Synonyms

METT10D; METTL16

Product Information

Source

Rabbit

Isotype

IgG

Purification

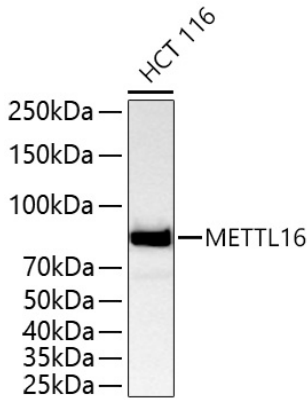
Affinity purification

Storage

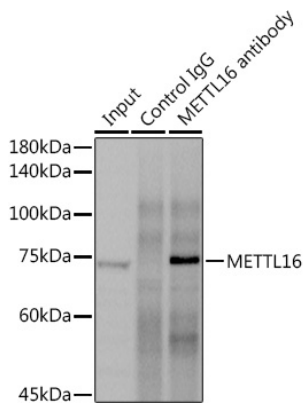
Store at -20°C. Avoid freeze / thaw cycles.

Buffer: PBS with 0.09% Sodium azide, 50% glycerol, pH7.3.

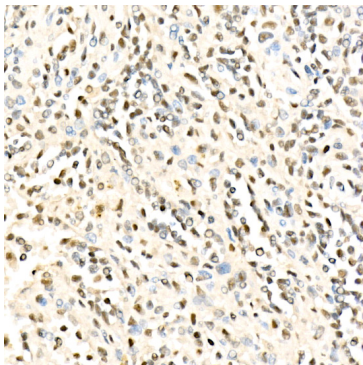
Validation Data



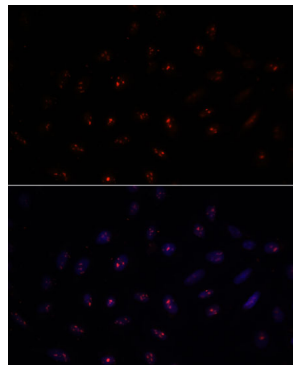
Western blot analysis of lysates from HCT 116 cells using METTL16 Rabbit pAb (A15894) at 1:5000 dilution incubated overnight at 4°C.
Secondary antibody: HRP-conjugated Goat anti-Rabbit IgG (H+L) (AS014) at 1:10000 dilution.
Lysates/proteins: 25 µg per lane.
Blocking buffer: 3% nonfat dry milk in TBST.
Detection: ECL Basic Kit (RM00020).
Exposure time: 45 s.



Immunoprecipitation analysis of 300 µg extracts of LNCaP cells using 3 µg METTL16 antibody (A15894).
Western blot was performed from the immunoprecipitate using METTL16 (A15894) at a dilution of 1:1000.



Immunohistochemistry analysis of paraffin-embedded Human spleen using METTL16 Rabbit pAb (A15894) at dilution of 1:100 (40x lens). High pressure antigen retrieval performed with 0.01M Citrate buffer (pH 6.0) prior to IHC staining.



Immunofluorescence analysis of U-2 OS cells using METTL16 Rabbit pAb (A15894) at dilution of 1:100. Secondary antibody: Cy3-conjugated Goat anti-Rabbit IgG (H+L) (AS007) at 1:500 dilution. Blue: DAPI for nuclear staining.