

LRRTM4 Rabbit pAb

Catalog No.: A15898 **1 Publications**

Basic Information

Observed MW

80kDa

Calculated MW

67kDa

Category

Primary antibody

Applications

ELISA,WB

Cross-Reactivity

Human, Mouse, Rat

Background

Predicted to enable heparan sulfate proteoglycan binding activity. Predicted to be involved in regulation of synapse assembly. Predicted to act upstream of or within AMPA glutamate receptor clustering; positive regulation of synapse assembly; and regulation of presynaptic membrane organization. Predicted to be located in postsynaptic membrane. Predicted to be part of AMPA glutamate receptor complex. Predicted to be active in extracellular matrix; extracellular space; and glutamatergic synapse. Predicted to be integral component of postsynaptic density membrane.

Recommended Dilutions

WB 1:500 - 1:2000

Immunogen Information

Gene ID

80059

Swiss Prot

Q86VH4

Immunogen

Recombinant fusion protein containing a sequence corresponding to amino acids 310-420 of human LRRTM4 (NP_001269857.1).

Synonyms

LRRTM4

Contact

☎ | 400-999-6126

✉ | cn.market@abclonal.com.cn

🌐 | www.abclonal.com.cn

Product Information

Source

Rabbit

Isotype

IgG

Purification

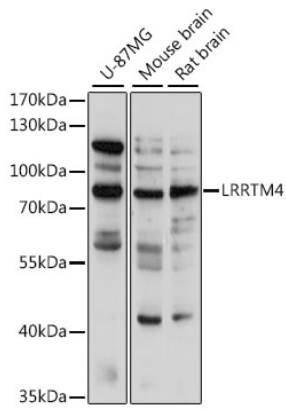
Affinity purification

Storage

Store at -20°C. Avoid freeze / thaw cycles.

Buffer: PBS with 0.01% thimerosal, 50% glycerol, pH7.3.

Validation Data



Western blot analysis of various lysates using LRRTM4 Rabbit pAb (A15898) at 1:1000 dilution.
Secondary antibody: HRP Goat Anti-Rabbit IgG (H+L) (AS014) at 1:10000 dilution.
Lysates/proteins: 25 μ g per lane.
Blocking buffer: 3% nonfat dry milk in TBST.
Detection: ECL Basic Kit (RM00020).
Exposure time: 10s.