

SF3B5 Rabbit pAb

Catalog No.: A15905

Basic Information

Observed MW

11kDa

Calculated MW

10kDa

Category

Primary antibody

Applications

ELISA, WB

Cross-Reactivity

Human, Mouse, Rat

Background

Enables RNA binding activity and splicing factor binding activity. Involved in mRNA splicing, via spliceosome. Located in nucleoplasm. Part of U12-type spliceosomal complex and U2-type precatalytic spliceosome.

Recommended Dilutions

WB 1:500 - 1:2000

Immunogen Information

Gene ID

83443

Swiss Prot

Q9BWJ5

Immunogen

Recombinant fusion protein containing a sequence corresponding to amino acids 1-86 of human SF3B5 (NP_112577.1).

Synonyms

Ysf3; SF3b10; SF3B5

Contact

 | 400-999-6126

 | cn.market@abclonal.com.cn

 | www.abclonal.com.cn

Product Information

Source

Rabbit

Isotype

IgG

Purification

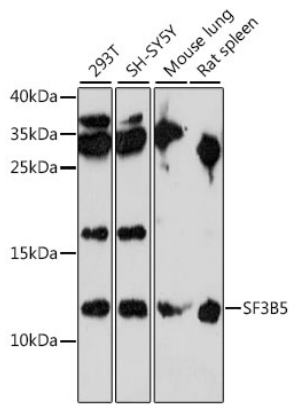
Affinity purification

Storage

Store at -20°C. Avoid freeze / thaw cycles.

Buffer: PBS with 0.01% thimerosal, 50% glycerol, pH7.3.

Validation Data



Western blot analysis of various lysates using SF3B5 Rabbit pAb (A15905) at 1:1000 dilution.
Secondary antibody: HRP Goat Anti-Rabbit IgG (H+L) (AS014) at 1:10000 dilution.
Lysates/proteins: 25µg per lane.
Blocking buffer: 3% nonfat dry milk in TBST.
Detection: ECL Enhanced Kit (RM00021).
Exposure time: 90s.