

PLVAP Rabbit pAb

Catalog No.: A15906 **1 Publications**

Basic Information

Observed MW

55kDa

Calculated MW

51kDa

Category

Primary antibody

Applications

ELISA, WB

Cross-Reactivity

Mouse, Rat

Background

Predicted to enable identical protein binding activity. Involved in MAPK cascade; positive regulation of cellular extravasation; and tumor necrosis factor-mediated signaling pathway. Located in cell surface. Colocalizes with caveola. Implicated in congenital diarrhea.

Recommended Dilutions

WB 1:500 - 1:2000

Immunogen Information

Gene ID

83483

Swiss Prot

Q9BX97

Immunogen

Recombinant fusion protein containing a sequence corresponding to amino acids 63-442 of human PLVAP (NP_112600.1).

Synonyms

PV1; FELS; PV-1; gp68; DIAR10; PLVAP

Contact

 | 400-999-6126

 | cn.market@abclonal.com.cn

 | www.abclonal.com.cn

Product Information

Source

Rabbit

Isotype

IgG

Purification

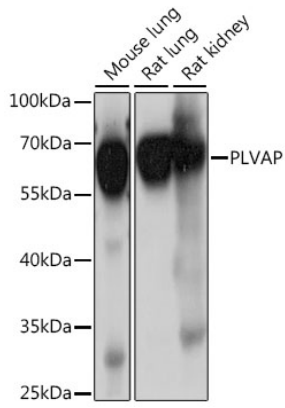
Affinity purification

Storage

Store at -20°C. Avoid freeze / thaw cycles.

Buffer: PBS with 0.01% thimerosal, 50% glycerol, pH7.3.

Validation Data



Western blot analysis of various lysates using PLVAP Rabbit pAb (A15906) at 1:1000 dilution.
Secondary antibody: HRP Goat Anti-Rabbit IgG (H+L) (AS014) at 1:10000 dilution.
Lysates/proteins: 25 μ g per lane.
Blocking buffer: 3% nonfat dry milk in TBST.
Detection: ECL Basic Kit (RM00020).
Exposure time: 10s.