

DCTN5 Rabbit pAb

Catalog No.: A15915

Basic Information

Observed MW

20kDa

Calculated MW

20kDa

Category

Primary antibody

Applications

ELISA, WB

Cross-Reactivity

Human, Mouse, Rat

Background

This gene encodes a subunit of dynactin, a component of the cytoplasmic dynein motor machinery involved in minus-end-directed transport. The encoded protein is a component of the pointed-end subcomplex and is thought to bind membranous cargo. A pseudogene of this gene is located on the long arm of chromosome 1. Alternatively spliced transcript variants encoding multiple isoforms have been observed for this gene.

Recommended Dilutions

WB 1:500 - 1:2000

Immunogen Information

Gene ID

84516

Swiss Prot

Q9BTE1

Immunogen

A synthetic peptide corresponding to a sequence within amino acids 1-100 of human DCTN5 (NP_115875.1).

Synonyms

DCTN5

Contact

 | 400-999-6126

 | cn.market@abclonal.com.cn

 | www.abclonal.com.cn

Product Information

Source

Rabbit

Isotype

IgG

Purification

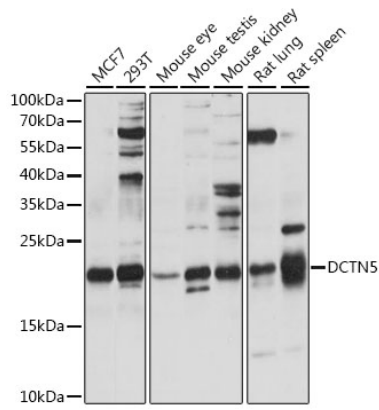
Affinity purification

Storage

Store at -20°C. Avoid freeze / thaw cycles.

Buffer: PBS with 0.01% thimerosal, 50% glycerol, pH7.3.

Validation Data



Western blot analysis of various lysates using DCTN5 Rabbit pAb (A15915) at 1:1000 dilution.
Secondary antibody: HRP Goat Anti-Rabbit IgG (H+L) (AS014) at 1:10000 dilution.
Lysates/proteins: 25µg per lane.
Blocking buffer: 3% nonfat dry milk in TBST.
Detection: ECL Basic Kit (RM00020).
Exposure time: 60s.