

AFAP1L2 Rabbit pAb

Catalog No.: A15916

Basic Information

Observed MW

110kDa

Calculated MW

91kDa

Category

Primary antibody

Applications

ELISA, WB

Cross-Reactivity

Human

Background

Enables SH2 domain binding activity; SH3 domain binding activity; and protein tyrosine kinase activator activity. Involved in several processes, including positive regulation of epidermal growth factor receptor signaling pathway; regulation of gene expression; and regulation of mitotic cell cycle. Located in cytosol and plasma membrane.

Recommended Dilutions

WB 1:500 - 1:2000

Immunogen Information

Gene ID

84632

Swiss Prot

Q8N4X5

Immunogen

Recombinant fusion protein containing a sequence corresponding to amino acids 1-300 of human AFAP1L2 (NP_001001936.1).

Synonyms

XB130; KIAA1914; CTB-1144G6.4; AFAP1L2

Contact

☎ | 400-999-6126

✉ | cn.market@abclonal.com.cn

🌐 | www.abclonal.com.cn

Product Information

Source

Rabbit

Isotype

IgG

Purification

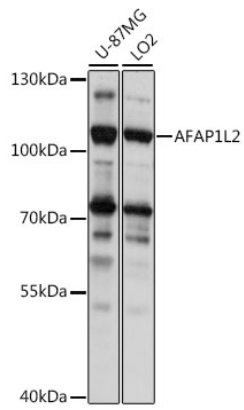
Affinity purification

Storage

Store at -20°C. Avoid freeze / thaw cycles.

Buffer: PBS with 0.01% thimerosal, 50% glycerol, pH7.3.

Validation Data



Western blot analysis of various lysates using AFAP1L2 Rabbit pAb (A15916) at 1:1000 dilution.
Secondary antibody: HRP Goat Anti-Rabbit IgG (H+L) (AS014) at 1:10000 dilution.
Lysates/proteins: 25 μ g per lane.
Blocking buffer: 3% nonfat dry milk in TBST.
Detection: ECL Basic Kit (RM00020).
Exposure time: 1s.