

ADD1 Rabbit pAb

Catalog No.: A1592

Basic Information

Observed MW

73kDa

Calculated MW

81kDa

Category

Primary antibody

Applications

ELISA, WB

Cross-Reactivity

Human, Mouse

Background

Adducins are a family of cytoskeletal proteins encoded by three genes (alpha, beta, and gamma). Adducin acts as a heterodimer of the related alpha, beta, or gamma subunits. The protein encoded by this gene represents the alpha subunit. Alpha- and beta-adducin include a protease-resistant N-terminal region and a protease-sensitive, hydrophilic C-terminal region. Adducin binds with high affinity to Ca(2+)/calmodulin and is a substrate for protein kinases A and C.

Recommended Dilutions

WB 1:500 - 1:2000

Immunogen Information

Gene ID

118

Swiss Prot

P35611

Immunogen

Recombinant fusion protein containing a sequence corresponding to amino acids 60-300 of human ADD1 (NP_054908.2).

Synonyms

ADDA; ADD1

Contact

 | 400-999-6126

 | cn.market@abclonal.com.cn

 | www.abclonal.com.cn

Product Information

Source

Rabbit

Isotype

IgG

Purification

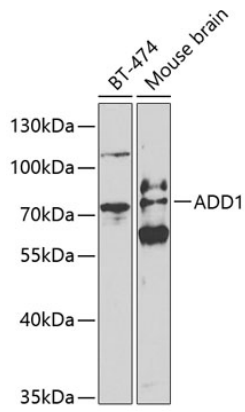
Affinity purification

Storage

Store at -20°C. Avoid freeze / thaw cycles.

Buffer: PBS with 0.02% sodium azide, 50% glycerol, pH 7.3.

Validation Data



Western blot analysis of extracts of various cell lines, using ADD1 antibody (A1592) at 1:500 dilution.
Secondary antibody: HRP Goat Anti-Rabbit IgG (H+L) (AS014) at 1:10000 dilution.
Lysates/proteins: 25 μ g per lane.
Blocking buffer: 3% nonfat dry milk in TBST.