

# ERP27 Rabbit pAb

Catalog No.: A15944 **1 Publications**

## Basic Information

### Observed MW

35kDa

### Calculated MW

30kDa

### Category

Primary antibody

### Applications

ELISA, WB

### Cross-Reactivity

Mouse, Rat

## Background

This gene encodes a noncatalytic member of the protein disulfide isomerase (PDI) family of endoplasmic reticulum (ER) proteins. The canonical protein has an N-terminal signal sequence, two thioredoxin (TRX)-like domains and a C-terminal ER-retention sequence. Alternative splicing results in multiple transcript variants encoding distinct isoforms; some of which lack domains present in the canonical protein.

## Recommended Dilutions

WB 1:500 - 1:2000

## Immunogen Information

### Gene ID

121506

### Swiss Prot

Q96DNO

### Immunogen

Recombinant fusion protein containing a sequence corresponding to amino acids 1-273 of human ERP27 (NP\_689534.1).

### Synonyms

PDIA8; C12orf46; ERP27

## Contact

☎ | 400-999-6126

✉ | [cn.market@abclonal.com.cn](mailto:cn.market@abclonal.com.cn)

🌐 | [www.abclonal.com.cn](http://www.abclonal.com.cn)

## Product Information

### Source

Rabbit

### Isotype

IgG

### Purification

Affinity purification

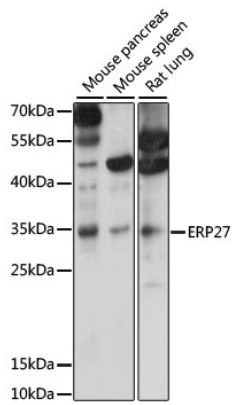
### Storage

Store at -20°C. Avoid freeze / thaw cycles.

Buffer: PBS with 0.01% thimerosal, 50% glycerol, pH7.3.

## Validation Data

---



Western blot analysis of various lysates using ERP27 Rabbit pAb (A15944) at 1000 dilution.  
Secondary antibody: HRP Goat Anti-Rabbit IgG (H+L) (AS014) at 1:10000 dilution.  
Lysates/proteins: 25µg per lane.  
Blocking buffer: 3% nonfat dry milk in TBST.  
Detection: ECL Basic Kit (RM00020).  
Exposure time: 30s.