

LSM12 Rabbit pAb

Catalog No.: A15947

Basic Information

Observed MW

22kDa

Calculated MW

22kDa

Category

Primary antibody

Applications

ELISA, WB

Cross-Reactivity

Human, Mouse

Background

Nicotinic acid adenine dinucleotide phosphate (NAADP) binding protein (PubMed:34362892). Confers NAADP sensitivity to the two pore channel complex (TPCs) by acting as TPC accessory protein necessary for NAADP-evoked Ca(2+) release (PubMed:34362892). (LSM12_HUMAN, Q3MHD2)

Recommended Dilutions

WB 1:500 - 1:2000

Immunogen Information

Gene ID

124801

Swiss Prot

Q3MHD2

Immunogen

Recombinant fusion protein containing a sequence corresponding to amino acids 1-195 of human LSM12 (NP_689557.1).

Synonyms

PNAS-135; LSM12

Contact

☎ | 400-999-6126

✉ | cn.market@abclonal.com.cn

🌐 | www.abclonal.com.cn

Product Information

Source

Rabbit

Isotype

IgG

Purification

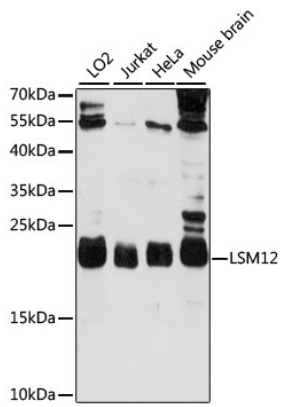
Affinity purification

Storage

Store at -20°C. Avoid freeze / thaw cycles.

Buffer: PBS with 0.01% thimerosal, 50% glycerol, pH7.3.

Validation Data



Western blot analysis of various lysates using LSM12 Rabbit pAb (A15947) at 1000 dilution.
Secondary antibody: HRP Goat Anti-Rabbit IgG (H+L) (AS014) at 1:10000 dilution.
Lysates/proteins: 25 μ g per lane.
Blocking buffer: 3% nonfat dry milk in TBST.
Detection: ECL Basic Kit (RM00020).
Exposure time: 60s.