

ZFP42 Rabbit pAb

Catalog No.: A15954

Basic Information

Observed MW

35kDa

Calculated MW

35kDa

Category

Primary antibody

Applications

ELISA, WB

Cross-Reactivity

Human

Background

Enables sequence-specific double-stranded DNA binding activity. Involved in female gonad development and male gonad development. Located in cytoplasm.

Recommended Dilutions

WB 1:500 - 1:2000

Immunogen Information

Gene ID

132625

Swiss Prot

Q96MM3

Immunogen

Recombinant fusion protein containing a sequence corresponding to amino acids 1-140 of human ZFP42 (NP_777560.2).

Synonyms

REX1; REX-1; ZNF754; zfp-42; ZFP42

Contact

☎ | 400-999-6126

✉ | cn.market@abclonal.com.cn

🌐 | www.abclonal.com.cn

Product Information

Source

Rabbit

Isotype

IgG

Purification

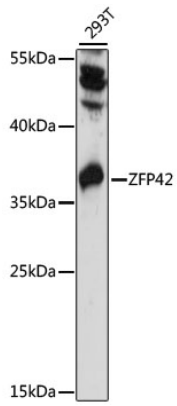
Affinity purification

Storage

Store at -20°C. Avoid freeze / thaw cycles.

Buffer: PBS with 0.01% thimerosal, 50% glycerol, pH7.3.

Validation Data



Western blot analysis of lysates from 293T cells, using ZFP42 Rabbit pAb (A15954) at 1000 dilution.
Secondary antibody: HRP Goat Anti-Rabbit IgG (H+L) (AS014) at 1:10000 dilution.
Lysates/proteins: 25µg per lane.
Blocking buffer: 3% nonfat dry milk in TBST.
Detection: ECL Basic Kit (RM00020).
Exposure time: 90s.