

NSMCE1 Rabbit pAb

Catalog No.: A15966

Basic Information

Observed MW

31kDa

Calculated MW

31kDa

Category

Primary antibody

Applications

ELISA, WB

Cross-Reactivity

Human, Rat

Background

Enables protein dimerization activity and ubiquitin protein ligase activity. Involved in positive regulation of response to DNA damage stimulus. Located in nucleoplasm. Part of Smc5-Smc6 complex.

Recommended Dilutions

WB 1:500 - 1:2000

Immunogen Information

Gene ID

197370

Swiss Prot

Q8WV22

Immunogen

Recombinant fusion protein containing a sequence corresponding to amino acids 7-266 of human NSMCE1 (NP_659547.2).

Synonyms

NSE1; NSMCE1

Contact

☎ | 400-999-6126

✉ | cn.market@abclonal.com.cn

🌐 | www.abclonal.com.cn

Product Information

Source

Rabbit

Isotype

IgG

Purification

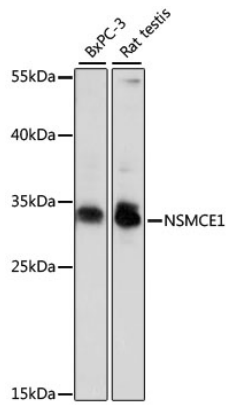
Affinity purification

Storage

Store at -20°C. Avoid freeze / thaw cycles.

Buffer: PBS with 0.01% thimerosal, 50% glycerol, pH7.3.

Validation Data



Western blot analysis of various lysates using NSMCE1 Rabbit pAb (A15966) at 1000 dilution.
Secondary antibody: HRP Goat Anti-Rabbit IgG (H+L) (AS014) at 1:10000 dilution.
Lysates/proteins: 25µg per lane.
Blocking buffer: 3% nonfat dry milk in TBST.
Detection: ECL Basic Kit (RM00020).
Exposure time: 10s.