

# ANT1/ANT2/ANT3/ANT4 Rabbit pAb

Catalog No.: A15988

1 Publications

## Basic Information

### Observed MW

30kDa

### Calculated MW

33kDa/32kDa/35kDa

### Category

Primary antibody

### Applications

ELISA, WB, IHC-P

### Cross-Reactivity

Human, Mouse, Rat

## Background

ANTs are the mitochondrial carrier subfamily of solute carrier proteins. ANT protein functions as a gated pore that translocates ADP from the cytoplasm into the mitochondrial matrix and ATP from the mitochondrial matrix into the cytoplasm. The protein forms a homodimer embedded in the inner mitochondria membrane.

## Recommended Dilutions

WB 1:500 - 1:2000

IHC-P 1:50 - 1:200

## Immunogen Information

### Gene ID

291/292/293/83447

### Swiss Prot

P12235/P05141/P12236/Q9H0C2

### Immunogen

A synthetic peptide corresponding to a sequence within amino acids 200 to the C-terminus of human ANT1 (NP\_001142.2).

### Synonyms

ANT1/ANT2/ANT3/ANT4

## Contact

☎ | 400-999-6126

✉ | [cn.market@abclonal.com.cn](mailto:cn.market@abclonal.com.cn)

🌐 | [www.abclonal.com.cn](http://www.abclonal.com.cn)

## Product Information

### Source

Rabbit

### Isotype

IgG

### Purification

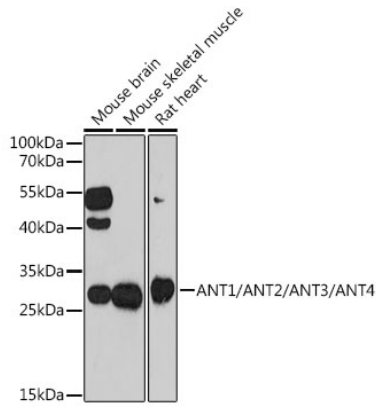
Affinity purification

### Storage

Store at -20°C. Avoid freeze / thaw cycles.

Buffer: PBS with 0.01% thimerosal, 50% glycerol, pH7.3.

## Validation Data



Western blot analysis of various lysates using ANT1/ANT2/ANT3/ANT4 Rabbit pAb (A15988) at 1:1000 dilution.

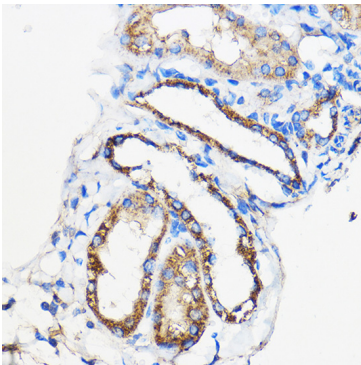
Secondary antibody: HRP Goat Anti-Rabbit IgG (H+L) (AS014) at 1:10000 dilution.

Lysates/proteins: 25µg per lane.

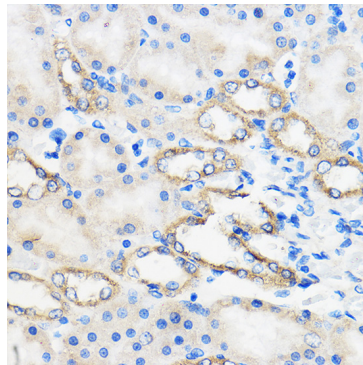
Blocking buffer: 3% nonfat dry milk in TBST.

Detection: ECL Enhanced Kit (RM00021).

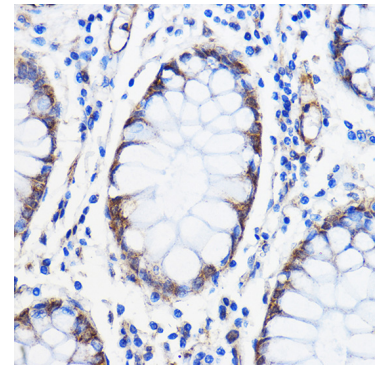
Exposure time: 150s.



Immunohistochemistry analysis of paraffin-embedded Mouse kidney using ANT1/ANT2/ANT3/ANT4 Rabbit pAb (A15988) at dilution of 1:50 (40x lens). Perform microwave antigen retrieval with 10 mM PBS buffer pH 7.2 before commencing with IHC staining protocol.



Immunohistochemistry analysis of paraffin-embedded Rat kidney using ANT1/ANT2/ANT3/ANT4 Rabbit pAb (A15988) at dilution of 1:50 (40x lens). Perform microwave antigen retrieval with 10 mM PBS buffer pH 7.2 before commencing with IHC staining protocol.



Immunohistochemistry analysis of paraffin-embedded Human colon carcinoma using ANT1/ANT2/ANT3/ANT4 Rabbit pAb (A15988) at dilution of 1:50 (40x lens). Perform microwave antigen retrieval with 10 mM PBS buffer pH 7.2 before commencing with IHC staining protocol.