

FYB Rabbit pAb

Catalog No.: A15997

Basic Information

Observed MW

120kDa

Calculated MW

85kDa

Category

Primary antibody

Applications

ELISA, WB

Cross-Reactivity

Human, Mouse

Background

The protein encoded by this gene is an adapter for the FYN protein and LCP2 signaling cascades in T-cells. The encoded protein is involved in platelet activation and controls the expression of interleukin-2. Three transcript variants encoding different isoforms have been found for this gene.

Recommended Dilutions

WB 1:500 - 1:1000

Immunogen Information

Gene ID

2533

Swiss Prot

O15117

Immunogen

Recombinant fusion protein containing a sequence corresponding to amino acids 678-829 of human FYB (NP_001456.3).

Synonyms

FYB; ADAP; THC3; PRO0823; SLAP130; SLAP-130

Contact

☎ | 400-999-6126

✉ | cn.market@abclonal.com.cn

🌐 | www.abclonal.com.cn

Product Information

Source

Rabbit

Isotype

IgG

Purification

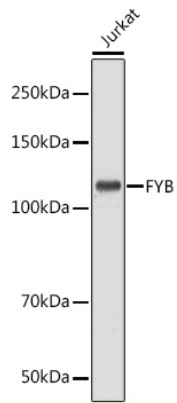
Affinity purification

Storage

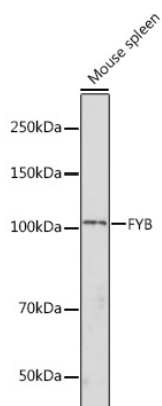
Store at -20°C. Avoid freeze / thaw cycles.

Buffer: PBS with 0.01% thimerosal, 50% glycerol, pH7.3.

Validation Data



Western blot analysis of lysates from Jurkat cells, using FYB Rabbit pAb (A15997) at 1:1000 dilution.
Secondary antibody: HRP Goat Anti-Rabbit IgG (H+L) (AS014) at 1:10000 dilution.
Lysates/proteins: 25µg per lane.
Blocking buffer: 3% nonfat dry milk in TBST.
Detection: ECL Basic Kit (RM00020).
Exposure time: 10s.



Western blot analysis of lysates from Mouse spleen, using FYB Rabbit pAb (A15997) at 1:1000 dilution.
Secondary antibody: HRP Goat Anti-Rabbit IgG (H+L) (AS014) at 1:10000 dilution.
Lysates/proteins: 25µg per lane.
Blocking buffer: 3% nonfat dry milk in TBST.
Detection: ECL Basic Kit (RM00020).
Exposure time: 180s.