

GPR4 Rabbit pAb

Catalog No.: A15998

Basic Information

Observed MW

45kDa

Calculated MW

41kDa

Category

Primary antibody

Applications

ELISA, WB

Cross-Reactivity

Human

Background

Enables G protein-coupled receptor activity. Involved in several processes, including G protein-coupled receptor signaling pathway; positive regulation of Rho protein signal transduction; and response to acidic pH. Located in plasma membrane.

Recommended Dilutions

WB 1:500 - 1:2000

Immunogen Information

Gene ID

2828

Swiss Prot

P46093

Immunogen

Recombinant fusion protein containing a sequence corresponding to amino acids 283-362 of human GPR4 (NP_005273.1).

Synonyms

GPR6C.; GPR4

Contact

 | 400-999-6126

 | cn.market@abclonal.com.cn

 | www.abclonal.com.cn

Product Information

Source

Rabbit

Isotype

IgG

Purification

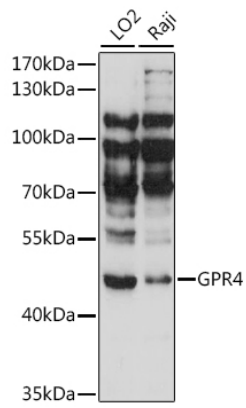
Affinity purification

Storage

Store at -20°C. Avoid freeze / thaw cycles.

Buffer: PBS with 0.01% thimerosal, 50% glycerol, pH7.3.

Validation Data



Western blot analysis of various lysates using GPR4 Rabbit pAb (A15998) at 1:1000 dilution.
Secondary antibody: HRP Goat Anti-Rabbit IgG (H+L) (AS014) at 1:10000 dilution.
Lysates/proteins: 25µg per lane.
Blocking buffer: 3% nonfat dry milk in TBST.
Detection: ECL Basic Kit (RM00020).
Exposure time: 30s.