

GPX2 Rabbit pAb

Catalog No.: A15999 **7 Publications**

Basic Information

Observed MW

21kDa

Calculated MW

22kDa

Category

Primary antibody

Applications

WB, IHC-P, ELISA

Cross-Reactivity

Human, Mouse, Rat

Background

The protein encoded by this gene belongs to the glutathione peroxidase family, members of which catalyze the reduction of organic hydroperoxides and hydrogen peroxide (H₂O₂) by glutathione, and thereby protect cells against oxidative damage. Several isozymes of this gene family exist in vertebrates, which vary in cellular location and substrate specificity. This isozyme is predominantly expressed in the gastrointestinal tract (also in liver in human), is localized in the cytoplasm, and whose preferred substrate is hydrogen peroxide. Overexpression of this gene is associated with increased differentiation and proliferation in colorectal cancer. This isozyme is also a selenoprotein, containing the rare amino acid selenocysteine (Sec) at its active site. Sec is encoded by the UGA codon, which normally signals translation termination. The 3' UTRs of selenoprotein mRNAs contain a conserved stem-loop structure, designated the Sec insertion sequence (SECIS) element, that is necessary for the recognition of UGA as a Sec codon, rather than as a stop signal. Alternatively spliced transcript variants have been found for this gene.

Recommended Dilutions

WB 1:500 - 1:2000**IHC-P** 1:50 - 1:200**ELISA** Recommended starting concentration is 1 µg/mL. Please optimize the concentration based on your specific assay requirements.

Immunogen Information

Gene ID

2877

Swiss Prot

P18283

Immunogen

Recombinant protein (or fragment). This information is considered to be commercially sensitive.

Synonyms

GPRP; GPx-2; GI-GPx; GPRP-2; GPx-GI; GSHPx-2; GSHPX-GI; GPX2

Contact

 | 400-999-6126 | cn.market@abclonal.com.cn | www.abclonal.com.cn

Product Information

Source

Rabbit

Isotype

IgG

Purification

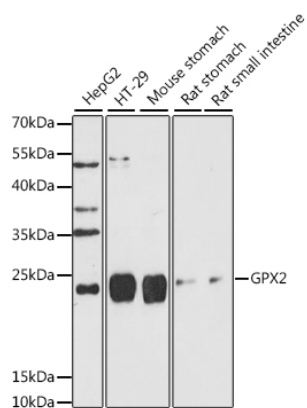
Affinity purification

Storage

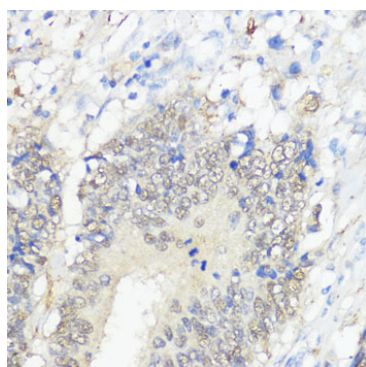
Store at -20°C. Avoid freeze / thaw cycles.

Buffer: PBS with 0.09% Sodium azide, 50% glycerol, pH 7.3.

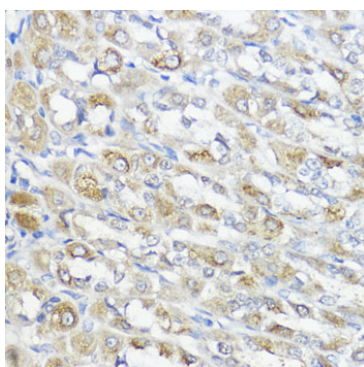
Validation Data



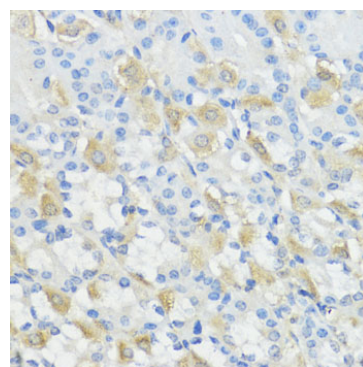
Western blot analysis of various lysates using GPX2 Rabbit pAb (A15999) at 1:1000 dilution. Secondary antibody: HRP-conjugated Goat anti-Rabbit IgG (H+L) (AS014) at 1:10000 dilution. Lysates/proteins: 25µg per lane. Blocking buffer: 3% nonfat dry milk in TBST. Detection: ECL Basic Kit (RM00020). Exposure time: 90s.



Immunohistochemistry analysis of paraffin-embedded Human colon carcinoma using GPX2 Rabbit pAb (A15999) at dilution of 1:100 (40x lens). Microwave antigen retrieval performed with 0.01M PBS Buffer (pH 7.2) prior to IHC staining.



Immunohistochemistry analysis of paraffin-embedded Rat stomach using GPX2 Rabbit pAb (A15999) at dilution of 1:100 (40x lens). Microwave antigen retrieval performed with 0.01M PBS Buffer (pH 7.2) prior to IHC staining.



Immunohistochemistry analysis of paraffin-embedded Mouse stomach using GPX2 Rabbit pAb (A15999) at dilution of 1:100 (40x lens). Microwave antigen retrieval performed with 0.01M PBS Buffer (pH 7.2) prior to IHC staining.