

MonoMethyl-UHRF1-K385 Rabbit pAb

Catalog No.: A16008

Basic Information

Observed MW

91kDa

Calculated MW

90kDa

Category

Primary antibody

Applications

WB,DB,ELISA

Cross-Reactivity

Human, Mouse, Rat

Background

This gene encodes a member of a subfamily of RING-finger type E3 ubiquitin ligases. The protein binds to specific DNA sequences, and recruits a histone deacetylase to regulate gene expression. Its expression peaks at late G1 phase and continues during G2 and M phases of the cell cycle. It plays a major role in the G1/S transition by regulating topoisomerase IIalpha and retinoblastoma gene expression, and functions in the p53-dependent DNA damage checkpoint. It is regarded as a hub protein for the integration of epigenetic information. This gene is up-regulated in various cancers, and it is therefore considered to be a therapeutic target. Multiple transcript variants encoding different isoforms have been found for this gene. A related pseudogene exists on chromosome 12.

Recommended Dilutions

WB 1:500 - 1:2000**DB** 1:500 - 1:2000

ELISA Recommended starting concentration is 1 µg/mL. Please optimize the concentration based on your specific assay requirements.

Immunogen Information

Gene ID

29128

Swiss Prot

Q96T88

Immunogen

Synthetic peptide. This information is considered to be commercially sensitive.

Synonyms

Np95; hNP95; ICBP90; RNF106; TDRD22; hUHRF1; huNp95; MonoMethyl-UHRF1-K385

Contact

 | 400-999-6126 | cn.market@abclonal.com.cn | www.abclonal.com.cn

Product Information

Source

Rabbit

Isotype

IgG

Purification

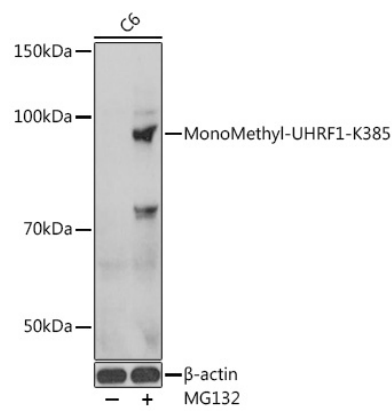
Affinity purification

Storage

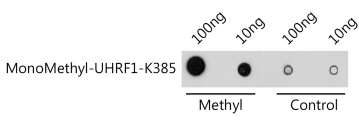
Store at -20°C. Avoid freeze / thaw cycles.

Buffer: PBS with 0.02% sodium azide, 50% glycerol, pH7.3.

Validation Data



Western blot analysis of lysates from C6 cells, using MonoMethyl-UHRF1-K385 Rabbit pAb (A16008) at 1:1000 dilution. C6 cells were treated with MG132(50 μ M) at 37°C for 90 minutes. Secondary antibody: HRP-conjugated Goat anti-Rabbit IgG (H+L) (AS014) at 1:10000 dilution. Lysates/proteins: 25 μ g per lane. Blocking buffer: 3% BSA. Detection: ECL Basic Kit (RM00020). Exposure time: 1s.



Dot-blot analysis of all sorts of methylation peptides using MonoMethyl-UHRF1-K385 antibody (A16008) at 1:1000 dilution.