

# HNRNPCL1 Rabbit pAb

Catalog No.: A16011

## Basic Information

### Observed MW

43kDa

### Calculated MW

32kDa

### Category

Primary antibody

### Applications

ELISA, WB

### Cross-Reactivity

Human

## Background

Enables identical protein binding activity. Predicted to be active in nucleus.

## Recommended Dilutions

WB 1:500 - 1:1000

## Immunogen Information

### Gene ID

343069

### Swiss Prot

O60812

### Immunogen

A synthetic peptide corresponding to a sequence within amino acids 200 to the C-terminus of human HNRNPCL1 (NP\_001013653.1).

### Synonyms

HNRPCL1; HNRNPCL1

## Contact

☎ | 400-999-6126

✉ | [cn.market@abclonal.com.cn](mailto:cn.market@abclonal.com.cn)

🌐 | [www.abclonal.com.cn](http://www.abclonal.com.cn)

## Product Information

### Source

Rabbit

### Isotype

IgG

### Purification

Affinity purification

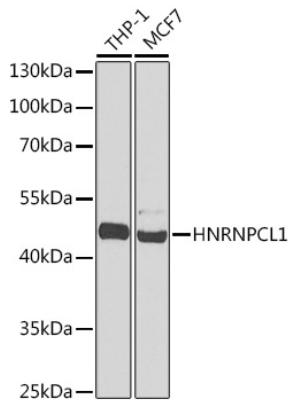
### Storage

Store at -20°C. Avoid freeze / thaw cycles.

Buffer: PBS with 0.02% sodium azide, 50% glycerol, pH7.3.

## Validation Data

---



Western blot analysis of extracts of various cell lines, using HNRNPCL1 antibody (A16011) at 1:1000 dilution.

Secondary antibody: HRP Goat Anti-Rabbit IgG (H+L) (AS014) at 1:10000 dilution.

Lysates/proteins: 25µg per lane.

Blocking buffer: 3% nonfat dry milk in TBST.

Detection: ECL Basic Kit (RM00020).

Exposure time: 90s.