

PGAM5 Rabbit pAb

Catalog No.: A16022 **2 Publications**

Basic Information

Observed MW

28kDa/30kDa

Calculated MW

32kDa

Category

Primary antibody

Applications

WB, IHC-P, IF/ICC, (ELISA)

Cross-Reactivity

Human, Mouse, Rat

Background

Enables GTPase activator activity and protein serine/threonine phosphatase activity. Involved in necroptotic process. Located in mitochondrion.

Recommended Dilutions

WB 1:500 - 1:1000

IHC-P 1:50 - 1:200

IF/ICC 1:50 - 1:200

ELISA Recommended starting concentration is 1 µg/mL. Please optimize the concentration based on your specific assay requirements.

Immunogen Information

Gene ID

192111

Swiss Prot

Q96HS1

Immunogen

Recombinant fusion protein containing a sequence corresponding to amino acids 50-146 of human PGAM5 (NP_001164014.1).

Synonyms

BXLBV68; PGAM5

Contact

☎ | 400-999-6126

✉ | cn.market@abclonal.com.cn

🌐 | www.abclonal.com.cn

Product Information

Source

Rabbit

Isotype

IgG

Purification

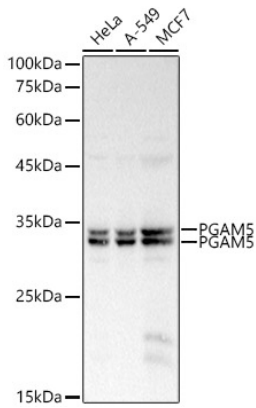
Affinity purification

Storage

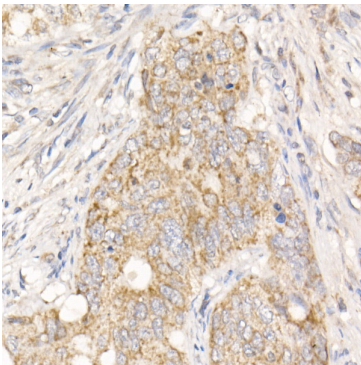
Store at -20°C. Avoid freeze / thaw cycles.

Buffer: PBS with 0.05% proclin300, 50% glycerol, pH7.3.

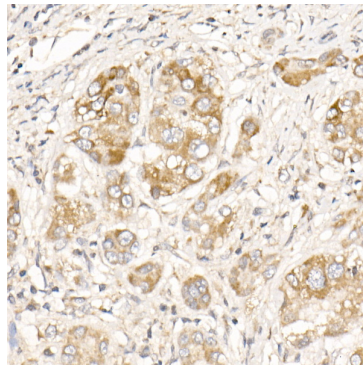
Validation Data



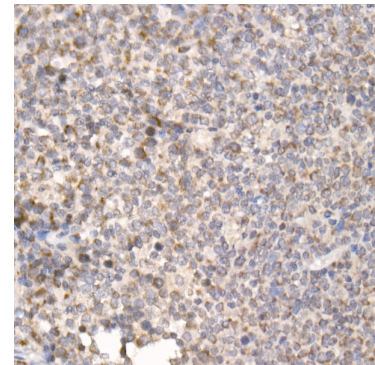
Western blot analysis of various lysates, using PGAM5 Rabbit pAb (A16022) at 1:500 dilution. Secondary antibody: HRP-conjugated Goat anti-Rabbit IgG (H+L) (AS014) at 1:10000 dilution. Lysates/proteins: 25µg per lane. Blocking buffer: 3% nonfat dry milk in TBST. Detection: ECL Basic Kit (RM00020). Exposure time: 1s.



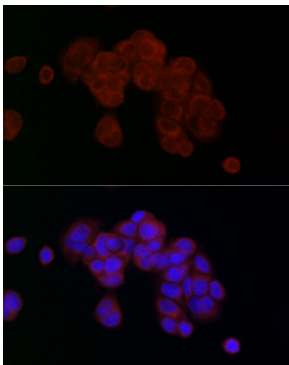
Immunohistochemistry analysis of paraffin-embedded Human colon carcinoma using PGAM5 Rabbit pAb (A16022) at dilution of 1:20 (40x lens). High pressure antigen retrieval performed with 0.01M Citrate Bufferr (pH 6.0) prior to IHC staining.



Immunohistochemistry analysis of paraffin-embedded Human liver cancer using PGAM5 Rabbit pAb (A16022) at dilution of 1:20 (40x lens). High pressure antigen retrieval performed with 0.01M Citrate Bufferr (pH 6.0) prior to IHC staining.



Immunohistochemistry analysis of paraffin-embedded Human tonsil using PGAM5 Rabbit pAb (A16022) at dilution of 1:20 (40x lens). High pressure antigen retrieval performed with 0.01M Citrate Bufferr (pH 6.0) prior to IHC staining.



Immunofluorescence analysis of MCF7 cells using PGAM5 Rabbit pAb (A16022) at dilution of 1:20 (40x lens). Secondary antibody: Cy3-conjugated Goat anti-Rabbit IgG (H+L) (AS007) at 1:500 dilution. Blue: DAPI for nuclear staining.