

# Cyclin B1 Rabbit pAb

Catalog No.: A16038 **4 Publications**

## Basic Information

### Observed MW

55kDa

### Calculated MW

48kDa

### Category

Primary antibody

### Applications

WB,IHC-P,IF/ICC,IP,ELISA

### Cross-Reactivity

Human, Mouse, Rat

## Background

The protein encoded by this gene is a regulatory protein involved in mitosis. The gene product complexes with p34(cdc2) to form the maturation-promoting factor (MPF). The encoded protein is necessary for proper control of the G2/M transition phase of the cell cycle.

## Recommended Dilutions

<b>WB</b>	1:500 - 1:1000
<b>IHC-P</b>	1:50 - 1:200
<b>IF/ICC</b>	1:50 - 1:200
<b>IP</b>	0.5µg-4µg antibody for 200µg-400µg extracts of whole cells
<b>ELISA</b>	Recommended starting concentration is 1 µg/mL. Please optimize the concentration based on your specific assay requirements.

## Contact

 | 400-999-6126

 | [cn.market@abclonal.com.cn](mailto:cn.market@abclonal.com.cn)

 | [www.abclonal.com.cn](http://www.abclonal.com.cn)

## Immunogen Information

### Gene ID

891

### Swiss Prot

P14635

### Immunogen

A synthetic peptide corresponding to a sequence within amino acids 334-433 of human Cyclin B1 (NP\_114172.1).

### Synonyms

CCNB; Cyclin B1

## Product Information

### Source

Rabbit

### Isotype

IgG

### Purification

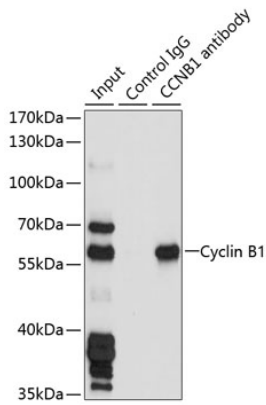
Affinity purification

### Storage

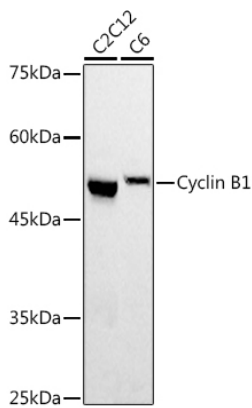
Store at -20°C. Avoid freeze / thaw cycles.

Buffer: PBS with 0.05% proclin300,50% glycerol,pH7.3.

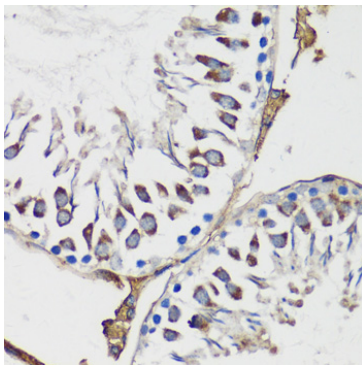
## Validation Data



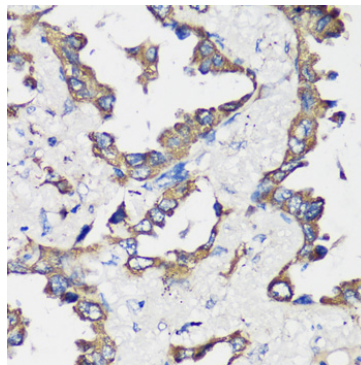
Immunoprecipitation analysis of 200 µg extracts of HeLa cells, using 3 µg Cyclin B1 antibody (A16038). Western blot was performed from the immunoprecipitate using Cyclin B1 antibody (A16038) at a dilution of 1:1000.



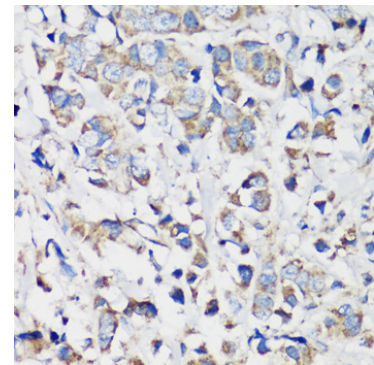
Western blot analysis of various lysates using Cyclin B1 Rabbit pAb (A16038) at 1:500 dilution. Secondary antibody: HRP-conjugated Goat anti-Rabbit IgG (H+L) (AS014) at 1:10000 dilution. Lysates/proteins: 25µg per lane. Blocking buffer: 3% nonfat dry milk in TBST. Detection: ECL Basic Kit (RM00020). Exposure time: 30s.



Immunohistochemistry analysis of paraffin-embedded Rat testis using Cyclin B1 Rabbit pAb (A16038) at dilution of 1:100 (40x lens). Microwave antigen retrieval performed with 0.01M PBS Buffer (pH 7.2) prior to IHC staining.



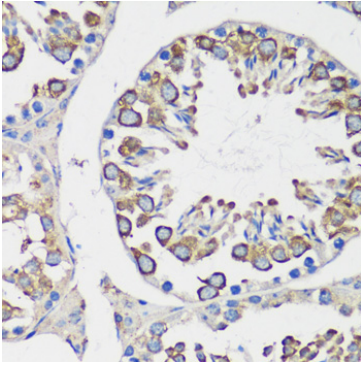
Immunohistochemistry analysis of paraffin-embedded Human lung cancer using Cyclin B1 Rabbit pAb (A16038) at dilution of 1:100 (40x lens). Microwave antigen retrieval performed with 0.01M PBS Buffer (pH 7.2) prior to IHC staining.



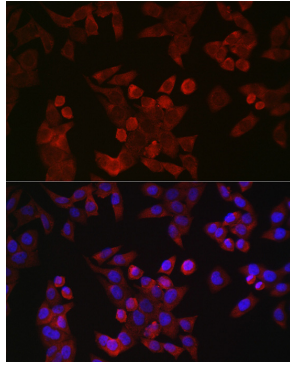
Immunohistochemistry analysis of paraffin-embedded Human breast cancer using Cyclin B1 Rabbit pAb (A16038) at dilution of 1:100 (40x lens). Microwave antigen retrieval performed with 0.01M PBS Buffer (pH 7.2) prior to IHC staining.

## Validation Data

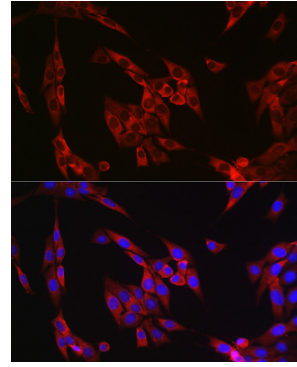
---



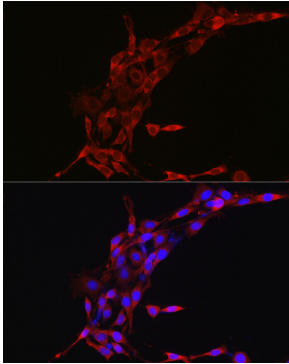
Immunohistochemistry analysis of paraffin-embedded Mouse testis using Cyclin B1 Rabbit pAb (A16038) at dilution of 1:100 (40x lens). Microwave antigen retrieval performed with 0.01M PBS Buffer (pH 7.2) prior to IHC staining.



Immunofluorescence analysis of HeLa cells using Cyclin B1 Rabbit pAb (A16038) at dilution of 1:100 (40x lens). Secondary antibody: Cy3-conjugated Goat anti-Rabbit IgG (H+L) (AS007) at 1:500 dilution. Blue: DAPI for nuclear staining.



Immunofluorescence analysis of NIH/3T3 cells using Cyclin B1 Rabbit pAb (A16038) at dilution of 1:100 (40x lens). Secondary antibody: Cy3-conjugated Goat anti-Rabbit IgG (H+L) (AS007) at 1:500 dilution. Blue: DAPI for nuclear staining.



Immunofluorescence analysis of PC-12 cells using Cyclin B1 Rabbit pAb (A16038) at dilution of 1:100 (40x lens). Secondary antibody: Cy3-conjugated Goat anti-Rabbit IgG (H+L) (AS007) at 1:500 dilution. Blue: DAPI for nuclear staining.