

# DCT Rabbit pAb

Catalog No.: A16041 **2 Publications**

## Basic Information

### Observed MW

59kDa

### Calculated MW

59kDa

### Category

Primary antibody

### Applications

ELISA, WB

### Cross-Reactivity

Human, Mouse

## Background

Predicted to enable dopachrome isomerase activity. Involved in response to blue light. Located in intracellular membrane-bounded organelle and plasma membrane. Implicated in oculocutaneous albinism.

## Recommended Dilutions

WB 1:500 - 1:2000

## Immunogen Information

### Gene ID

1638

### Swiss Prot

P40126

### Immunogen

Recombinant fusion protein containing a sequence corresponding to amino acids 50-350 of human DCT (NP\_001913.2).

### Synonyms

OCA8; TRP-2; TYRP2; DCT

## Contact

☎ | 400-999-6126

✉ | [cn.market@abclonal.com.cn](mailto:cn.market@abclonal.com.cn)

🌐 | [www.abclonal.com.cn](http://www.abclonal.com.cn)

## Product Information

### Source

Rabbit

### Isotype

IgG

### Purification

Affinity purification

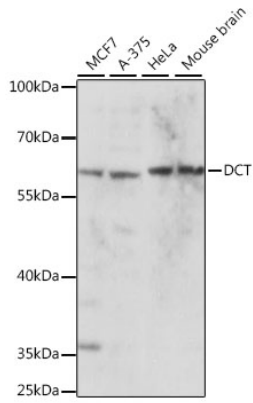
### Storage

Store at -20°C. Avoid freeze / thaw cycles.

Buffer: PBS with 0.01% thimerosal, 50% glycerol, pH7.3.

## Validation Data

---



Western blot analysis of various lysates using DCT Rabbit pAb (A16041) at 1:1000 dilution.  
Secondary antibody: HRP Goat Anti-Rabbit IgG (H+L) (AS014) at 1:10000 dilution.  
Lysates/proteins: 25µg per lane.  
Blocking buffer: 3% nonfat dry milk in TBST.  
Detection: ECL Basic Kit (RM00020).  
Exposure time: 10s.