

SLC28A2 Rabbit pAb

Catalog No.: A16086

1 Publications

Basic Information

Observed MW

72kDa

Calculated MW

72kDa

Category

Primary antibody

Applications

WB, ELISA

Cross-Reactivity

Human, Mouse, Rat

Background

Enables neurotransmitter transmembrane transporter activity and nucleoside transmembrane transporter activity. Involved in several processes, including nucleoside transport; purine nucleobase transmembrane transport; and pyrimidine-containing compound transmembrane transport. Predicted to be located in membrane. Predicted to be part of brush border membrane; coated vesicle; and vesicle membrane. Predicted to be integral component of plasma membrane.

Recommended Dilutions

WB 1:500 - 1:2000

ELISA Recommended starting concentration is 1 µg/mL. Please optimize the concentration based on your specific assay requirements.

Immunogen Information

Gene ID

9153

Swiss Prot

O43868

Immunogen

Synthetic peptide. This information is considered to be commercially sensitive.

Synonyms

CNT2; HCNT2; SPNT1; HsT17153; SLC28A2

Contact

☎ | 400-999-6126

✉ | cn.market@abclonal.com.cn

🌐 | www.abclonal.com.cn

Product Information

Source

Rabbit

Isotype

IgG

Purification

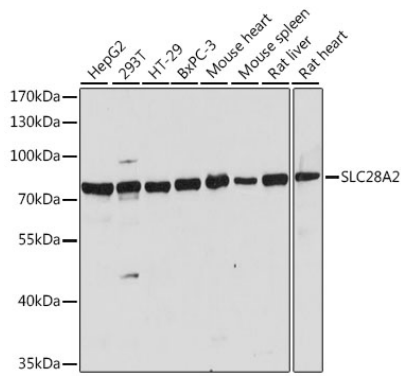
Affinity purification

Storage

Store at -20°C. Avoid freeze / thaw cycles.

Buffer: PBS with 0.01% thimerosal, 50% glycerol, pH7.3.

Validation Data



Western blot analysis of various lysates using SLC28A2 Rabbit pAb (A16086) at 1:1000 dilution. Secondary antibody: HRP-conjugated Goat anti-Rabbit IgG (H+L) (AS014) at 1:10000 dilution. Lysates/proteins: 25µg per lane. Blocking buffer: 3% nonfat dry milk in TBST. Detection: ECL Basic Kit (RM00020). Exposure time: 5s.