

CTRC Rabbit pAb

Catalog No.: A16104

Basic Information

Observed MW

30kDa

Calculated MW

29kDa

Category

Primary antibody

Applications

ELISA, WB

Cross-Reactivity

Mouse

Background

This gene encodes a member of the peptidase S1 family. The encoded protein is a serum calcium-decreasing factor that has chymotrypsin-like protease activity. Alternatively spliced transcript variants have been observed, but their full-length nature has not been determined.

Recommended Dilutions

WB 1:500 - 1:2000

Immunogen Information

Gene ID

11330

Swiss Prot

Q99895

Immunogen

Recombinant fusion protein containing a sequence corresponding to amino acids 30-150 of human CTRC (NP_009203.2).

Synonyms

CLCR; ELA4; CTRC

Contact

☎ | 400-999-6126

✉ | cn.market@abclonal.com.cn

🌐 | www.abclonal.com.cn

Product Information

Source

Rabbit

Isotype

IgG

Purification

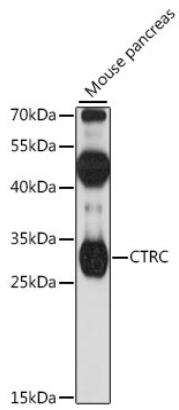
Affinity purification

Storage

Store at -20°C. Avoid freeze / thaw cycles.

Buffer: PBS with 0.01% thimerosal, 50% glycerol, pH7.3.

Validation Data



Western blot analysis of lysates from mouse pancreas, using CTRC Rabbit pAb (A16104) at 1:1000 dilution.

Secondary antibody: HRP Goat Anti-Rabbit IgG (H+L) (AS014) at 1:10000 dilution.

Lysates/proteins: 25µg per lane.

Blocking buffer: 3% nonfat dry milk in TBST.

Detection: ECL Basic Kit (RM00020).

Exposure time: 3min.