

# NLGN1 Rabbit pAb

Catalog No.: A16105

## Basic Information

### Observed MW

105kDa

### Calculated MW

96kDa

### Category

Primary antibody

### Applications

ELISA, WB

### Cross-Reactivity

Mouse

## Background

This gene encodes a member of a family of neuronal cell surface proteins. Members of this family may act as splice site-specific ligands for beta-neurexins and may be involved in the formation and remodeling of central nervous system synapses.

## Recommended Dilutions

WB 1:500 - 1:2000

## Immunogen Information

### Gene ID

22871

### Swiss Prot

Q8N2Q7

### Immunogen

A synthetic peptide corresponding to a sequence within amino acids 200-300 of human NLGN1 (NP\_055747.1).

### Synonyms

NL1; NLGN1

## Contact

 | 400-999-6126

 | [cn.market@abclonal.com.cn](mailto:cn.market@abclonal.com.cn)

 | [www.abclonal.com.cn](http://www.abclonal.com.cn)

## Product Information

### Source

Rabbit

### Isotype

IgG

### Purification

Affinity purification

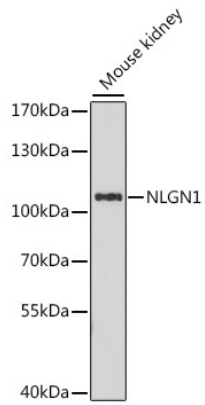
### Storage

Store at -20°C. Avoid freeze / thaw cycles.

Buffer: PBS with 0.01% thimerosal, 50% glycerol, pH7.3.

## Validation Data

---



Western blot analysis of lysates from mouse kidney, using NLGN1 Rabbit pAb (A16105) at 1:1000 dilution.  
Secondary antibody: HRP Goat Anti-Rabbit IgG (H+L) (AS014) at 1:10000 dilution.  
Lysates/proteins: 25µg per lane.  
Blocking buffer: 3% nonfat dry milk in TBST.  
Detection: ECL Enhanced Kit (RM00021).  
Exposure time: 6min.