

# CAB39 Rabbit pAb

Catalog No.: A16125

1 Publications

## Basic Information

### Observed MW

39kDa

### Calculated MW

40kDa

### Category

Primary antibody

### Applications

ELISA, WB, IF/ICC

### Cross-Reactivity

Human, Mouse, Rat

## Background

Enables kinase binding activity and protein serine/threonine kinase activator activity. Involved in intracellular signal transduction; peptidyl-serine phosphorylation; and positive regulation of protein phosphorylation. Located in extracellular exosome. Implicated in hepatocellular carcinoma. Biomarker of hepatocellular carcinoma and pancreatic cancer.

## Recommended Dilutions

WB 1:500 - 1:1000

IF/ICC 1:50 - 1:200

## Immunogen Information

### Gene ID

51719

### Swiss Prot

Q9Y376

### Immunogen

A synthetic peptide corresponding to a sequence within amino acids 1-341 of human CAB39 (NP\_057373.1).

### Synonyms

MO25; CGI-66; CAB39

## Contact

☎ | 400-999-6126

✉ | [cn.market@abclonal.com.cn](mailto:cn.market@abclonal.com.cn)

🌐 | [www.abclonal.com.cn](http://www.abclonal.com.cn)

## Product Information

### Source

Rabbit

### Isotype

IgG

### Purification

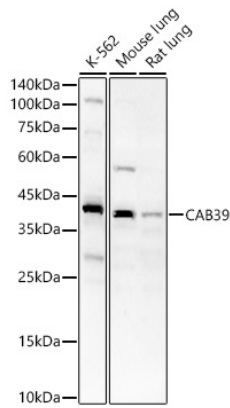
Affinity purification

### Storage

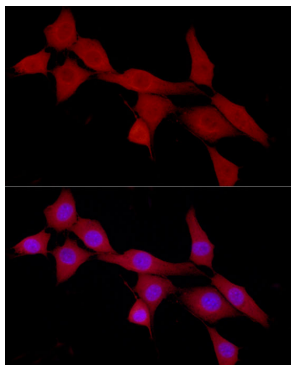
Store at -20°C. Avoid freeze / thaw cycles.

Buffer: PBS with 0.01% thimerosal, 50% glycerol, pH 7.3.

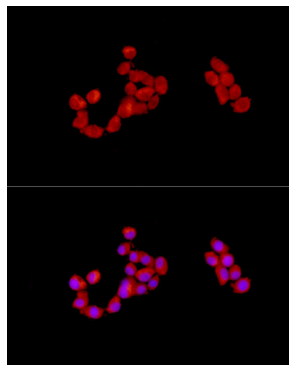
## Validation Data



Western blot analysis of various lysates, using CAB39 antibody (A16125) at 1:700 dilution. Secondary antibody: HRP Goat Anti-Rabbit IgG (H+L) (AS014) at 1:10000 dilution. Lysates/proteins: 25µg per lane. Blocking buffer: 3% nonfat dry milk in TBST. Detection: ECL Basic Kit (RM00020). Exposure time: 60s.



Immunofluorescence analysis of NIH/3T3 cells using CAB39 Rabbit pAb (A16125) at dilution of 1:100 (40x lens). Blue: DAPI for nuclear staining.



Immunofluorescence analysis of PC-12 cells using CAB39 Rabbit pAb (A16125) at dilution of 1:100 (40x lens). Blue: DAPI for nuclear staining.