

# PTOV1 Rabbit pAb

Catalog No.: A16126

## Basic Information

### Observed MW

47kDa

### Calculated MW

47kDa

### Category

Primary antibody

### Applications

ELISA, WB

### Cross-Reactivity

Human

## Background

This gene encodes a protein that was found to be overexpressed in prostate adenocarcinomas. The encoded protein was found to interact with the lipid raft protein flotillin-1 and shuttle it from the cytoplasm to the nucleus in a cell cycle dependent manner. Alternative splicing of this gene results in multiple transcript variants.

## Recommended Dilutions

WB 1:500 - 1:2000

## Immunogen Information

### Gene ID

53635

### Swiss Prot

Q86YD1

### Immunogen

A synthetic peptide corresponding to a sequence within amino acids 1-100 of human PTOV1 (NP\_001292037.1).

### Synonyms

ACID2; PTOV-1; PTOV1

## Contact

 | 400-999-6126

 | [cn.market@abclonal.com.cn](mailto:cn.market@abclonal.com.cn)

 | [www.abclonal.com.cn](http://www.abclonal.com.cn)

## Product Information

### Source

Rabbit

### Isotype

IgG

### Purification

Affinity purification

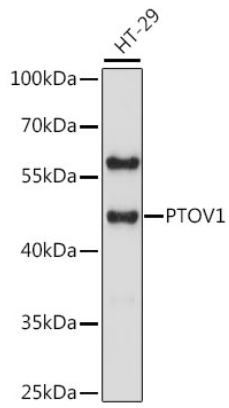
### Storage

Store at -20°C. Avoid freeze / thaw cycles.

Buffer: PBS with 0.01% thimerosal, 50% glycerol, pH7.3.

## Validation Data

---



Western blot analysis of lysates from HT-29 cells, using PTOV1 Rabbit pAb (A16126) at 1:1000 dilution.  
Secondary antibody: HRP Goat Anti-Rabbit IgG (H+L) (AS014) at 1:10000 dilution.  
Lysates/proteins: 25µg per lane.  
Blocking buffer: 3% nonfat dry milk in TBST.  
Detection: ECL Basic Kit (RM00020).  
Exposure time: 10s.