

# ARL15 Rabbit pAb

Catalog No.: A16127

## Basic Information

### Observed MW

23kDa

### Calculated MW

23kDa

### Category

Primary antibody

### Applications

ELISA, WB

### Cross-Reactivity

Mouse

## Background

Predicted to enable GTP binding activity and GTPase activity. Located in extracellular exosome.

## Recommended Dilutions

WB 1:500 - 1:2000

## Immunogen Information

### Gene ID

54622

### Swiss Prot

Q9NXU5

### Immunogen

Recombinant fusion protein containing a sequence corresponding to amino acids 1-204 of human ARL15 (NP\_061960.1).

### Synonyms

ARFRP2; ARL15

## Contact

 | 400-999-6126

 | [cn.market@abclonal.com.cn](mailto:cn.market@abclonal.com.cn)

 | [www.abclonal.com.cn](http://www.abclonal.com.cn)

## Product Information

### Source

Rabbit

### Isotype

IgG

### Purification

Affinity purification

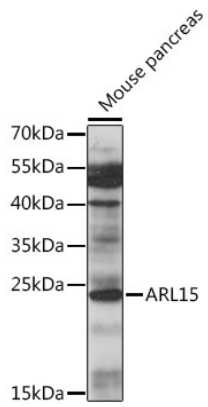
### Storage

Store at -20°C. Avoid freeze / thaw cycles.

Buffer: PBS with 0.01% thimerosal, 50% glycerol, pH7.3.

## Validation Data

---



Western blot analysis of lysates from mouse pancreas, using ARL15 Rabbit pAb (A16127) at 1:1000 dilution.

Secondary antibody: HRP Goat Anti-Rabbit IgG (H+L) (AS014) at 1:10000 dilution.

Lysates/proteins: 25µg per lane.

Blocking buffer: 3% nonfat dry milk in TBST.

Detection: ECL Basic Kit (RM00020).

Exposure time: 60s.