

FEM1A Rabbit pAb

Catalog No.: A16129

Basic Information

Observed MW

80kDa

Calculated MW

74kDa

Category

Primary antibody

Applications

ELISA, WB

Cross-Reactivity

Human, Mouse

Background

Enables EP4 subtype prostaglandin E2 receptor binding activity and ubiquitin ligase-substrate adaptor activity. Involved in negative regulation of inflammatory response and ubiquitin-dependent protein catabolic process via the C-end degron rule pathway. Part of Cul2-RING ubiquitin ligase complex. Is active in mitochondrion.

Recommended Dilutions

WB 1:500 - 1:2000

Immunogen Information

Gene ID

55527

Swiss Prot

Q9BSK4

Immunogen

Recombinant fusion protein containing a sequence corresponding to amino acids 100-300 of human FEM1A (NP_061178.1).

Synonyms

EPRAP; FEM1A

Contact

☎ | 400-999-6126

✉ | cn.market@abclonal.com.cn

🌐 | www.abclonal.com.cn

Product Information

Source

Rabbit

Isotype

IgG

Purification

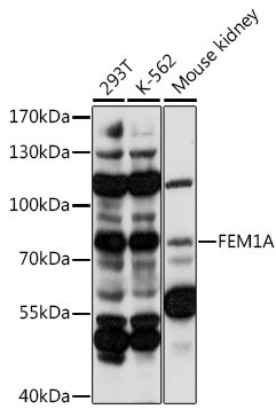
Affinity purification

Storage

Store at -20°C. Avoid freeze / thaw cycles.

Buffer: PBS with 0.01% thimerosal, 50% glycerol, pH7.3.

Validation Data



Western blot analysis of various lysates using FEM1A Rabbit pAb (A16129) at 1:1000 dilution.
Secondary antibody: HRP Goat Anti-Rabbit IgG (H+L) (AS014) at 1:10000 dilution.
Lysates/proteins: 25µg per lane.
Blocking buffer: 3% nonfat dry milk in TBST.
Detection: ECL Basic Kit (RM00020).
Exposure time: 60s.