

CHID1 Rabbit pAb

Catalog No.: A16142

Basic Information

Observed MW

55kDa

Calculated MW

45kDa

Category

Primary antibody

Applications

ELISA, WB

Cross-Reactivity

Mouse

Background

Enables oligosaccharide binding activity. Involved in negative regulation of cytokine production involved in inflammatory response. Located in several cellular components, including late endosome; lysosome; and trans-Golgi network.

Recommended Dilutions

WB 1:500 - 1:2000

Immunogen Information

Gene ID

66005

Swiss Prot

Q9BWS9

Immunogen

Recombinant fusion protein containing a sequence corresponding to amino acids 1-393 of human CHID1 (NP_076436.3).

Synonyms

GL008; SICLP; SI-CLP; CHID1

Contact

 | 400-999-6126

 | cn.market@abclonal.com.cn

 | www.abclonal.com.cn

Product Information

Source

Rabbit

Isotype

IgG

Purification

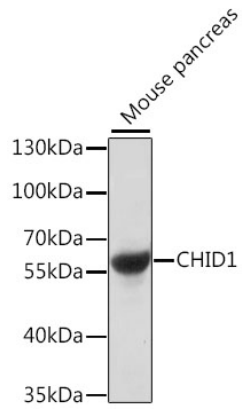
Affinity purification

Storage

Store at -20°C. Avoid freeze / thaw cycles.

Buffer: PBS with 0.01% thimerosal, 50% glycerol, pH7.3.

Validation Data



Western blot analysis of lysates from mouse pancreas, using CHID1 Rabbit pAb (A16142) at 1:1000 dilution.

Secondary antibody: HRP Goat Anti-Rabbit IgG (H+L) (AS014) at 1:10000 dilution.

Lysates/proteins: 25µg per lane.

Blocking buffer: 3% nonfat dry milk in TBST.

Detection: ECL Basic Kit (RM00020).

Exposure time: 1s.