

# BPIFB2 Rabbit pAb

Catalog No.: A16148

## Basic Information

### Observed MW

49kDa

### Calculated MW

49kDa

### Category

Primary antibody

### Applications

ELISA, WB

### Cross-Reactivity

Mouse, Rat

## Background

This gene encodes a member of the lipid transfer/lipopolysaccharide binding protein (LT/LBP) gene family. It is highly expressed in hypertrophic tonsils. This gene and three other members of the LT/LBP gene family form a cluster on the long arm of chromosome 20.

## Recommended Dilutions

WB 1:500 - 1:2000

## Immunogen Information

### Gene ID

80341

### Swiss Prot

Q8N4F0

### Immunogen

Recombinant fusion protein containing a sequence corresponding to amino acids 40-340 of human BPIFB2 (NP\_079503.1).

### Synonyms

RYSR; BPIL1; LPLUNC2; C20orf184; dj726C3.2; BPIFB2

## Contact

 | 400-999-6126

 | [cn.market@abclonal.com.cn](mailto:cn.market@abclonal.com.cn)

 | [www.abclonal.com.cn](http://www.abclonal.com.cn)

## Product Information

### Source

Rabbit

### Isotype

IgG

### Purification

Affinity purification

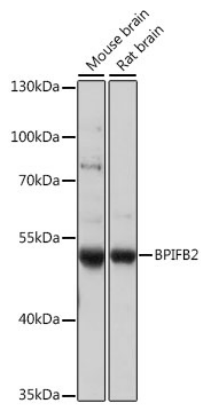
### Storage

Store at -20°C. Avoid freeze / thaw cycles.

Buffer: PBS with 0.01% thimerosal, 50% glycerol, pH7.3.

## Validation Data

---



Western blot analysis of various lysates using BPIFB2 Rabbit pAb (A16148) at 1:1000 dilution.  
Secondary antibody: HRP Goat Anti-Rabbit IgG (H+L) (AS014) at 1:10000 dilution.  
Lysates/proteins: 25µg per lane.  
Blocking buffer: 3% nonfat dry milk in TBST.  
Detection: ECL Basic Kit (RM00020).  
Exposure time: 15s.