

C11orf68 Rabbit pAb

Catalog No.: A16152

Basic Information

Observed MW

27kDa

Calculated MW

31kDa

Category

Primary antibody

Applications

ELISA, WB

Cross-Reactivity

Human, Mouse, Rat

Background

Enables RNA binding activity.

Recommended Dilutions

WB 1:500 - 1:2000

Immunogen Information

Gene ID

83638

Swiss Prot

Q9H3H3

Immunogen

Recombinant fusion protein containing a sequence corresponding to amino acids 42-292 of human C11orf68 (NP_113638.2).

Synonyms

P5326; BLES03; C11orf68

Contact

 | 400-999-6126

 | cn.market@abclonal.com.cn

 | www.abclonal.com.cn

Product Information

Source

Rabbit

Isotype

IgG

Purification

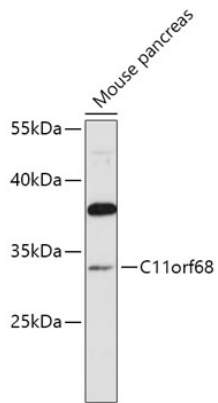
Affinity purification

Storage

Store at -20°C. Avoid freeze / thaw cycles.

Buffer: PBS with 0.01% thimerosal, 50% glycerol, pH7.3.

Validation Data



Western blot analysis of lysates from Mouse pancreas, using C11orf68 Rabbit pAb (A16152) at 1:1000 dilution.

Secondary antibody: HRP Goat Anti-Rabbit IgG (H+L) (AS014) at 1:10000 dilution.

Lysates/proteins: 25µg per lane.

Blocking buffer: 3% nonfat dry milk in TBST.

Detection: ECL Basic Kit (RM00020).

Exposure time: 90s.