

MAS1L Rabbit pAb

Catalog No.: A16161

Basic Information

Observed MW

42kDa

Calculated MW

42kDa

Category

Primary antibody

Applications

ELISA, WB

Cross-Reactivity

Human

Background

Predicted to enable G protein-coupled receptor activity. Predicted to be involved in G protein-coupled receptor signaling pathway. Located in cytosol; nucleoplasm; and plasma membrane.

Recommended Dilutions

WB 1:500 - 1:2000

Immunogen Information

Gene ID

116511

Swiss Prot

P35410

Immunogen

Recombinant fusion protein containing a sequence corresponding to amino acids 1-70 of human MAS1L (NP_443199.1).

Synonyms

MRG; MAS-L; dj994E9.2; MAS1L

Contact

☎ | 400-999-6126

✉ | cn.market@abclonal.com.cn

🌐 | www.abclonal.com.cn

Product Information

Source

Rabbit

Isotype

IgG

Purification

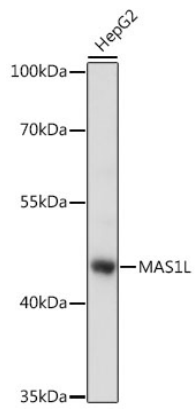
Affinity purification

Storage

Store at -20°C. Avoid freeze / thaw cycles.

Buffer: PBS with 0.01% thimerosal, 50% glycerol, pH7.3.

Validation Data



Western blot analysis of lysates from HepG2 cells, using MAS1L Rabbit pAb (A16161) at 1:1000 dilution.
Secondary antibody: HRP Goat Anti-Rabbit IgG (H+L) (AS014) at 1:10000 dilution.
Lysates/proteins: 25µg per lane.
Blocking buffer: 3% nonfat dry milk in TBST.
Detection: ECL Basic Kit (RM00020).
Exposure time: 3s.