

# GPR62 Rabbit pAb

Catalog No.: A16163

## Basic Information

### Observed MW

39kDa

### Calculated MW

38kDa

### Category

Primary antibody

### Applications

WB, ELISA

### Cross-Reactivity

Human, Mouse, Rat

## Background

Enables arrestin family protein binding activity. Involved in G protein-coupled receptor signaling pathway; inositol phosphate-mediated signaling; and positive regulation of cAMP-mediated signaling. Located in endosome and plasma membrane. Part of receptor complex.

## Recommended Dilutions

**WB** 1:500 - 1:1000

**ELISA** Recommended starting concentration is 1 µg/mL. Please optimize the concentration based on your specific assay requirements.

## Immunogen Information

### Gene ID

118442

### Swiss Prot

Q9BZJ7

### Immunogen

Synthetic peptide. This information is considered to be commercially sensitive.

### Synonyms

GPCR8; KPG\_005; GPR62

## Contact

☎ | 400-999-6126

✉ | [cn.market@abclonal.com.cn](mailto:cn.market@abclonal.com.cn)

🌐 | [www.abclonal.com.cn](http://www.abclonal.com.cn)

## Product Information

### Source

Rabbit

### Isotype

IgG

### Purification

Affinity purification

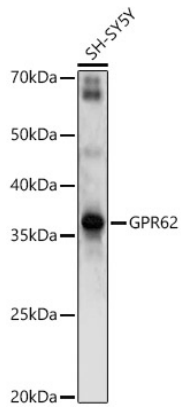
### Storage

Store at -20°C. Avoid freeze / thaw cycles.

Buffer: PBS with 0.01% thimerosal, 50% glycerol, pH7.3.

## Validation Data

---



Western blot analysis of lysates from SH-SY5Y cells, using GPR62 Rabbit pAb (A16163) at 1:1000 dilution.  
Secondary antibody: HRP-conjugated Goat anti-Rabbit IgG (H+L) (AS014) at 1:10000 dilution.  
Lysates/proteins: 25µg per lane.  
Blocking buffer: 3% nonfat dry milk in TBST.  
Detection: ECL Enhanced Kit (RM00021).  
Exposure time: 90s.