

GPR151 Rabbit pAb

Catalog No.: A16165

Basic Information

Observed MW

47kDa

Calculated MW

47kDa

Category

Primary antibody

Applications

ELISA, WB

Cross-Reactivity

Human, Mouse, Rat

Background

This gene encodes an orphan member of the class A rhodopsin-like family of G-protein-coupled receptors (GPCRs). Within the rhodopsin-like family, this gene is a member of the SOG subfamily that includes somatostatin, opioid, galanin, and kisspeptin receptors. The orthologous mouse gene has a restricted pattern of neuronal expression which is induced following nerve injury. All GPCRs have a transmembrane domain that includes seven transmembrane alpha-helices. A general feature of GPCR signaling is the agonist-induced conformational change in the receptor, leading to activation of the heterotrimeric G protein. The activated G protein then binds to and activates numerous downstream effector proteins, which generate second messengers that mediate a broad range of cellular and physiological processes.

Recommended Dilutions

WB 1:500 - 1:1000

Immunogen Information

Gene ID

134391

Swiss Prot

Q8TDV0

Immunogen

Recombinant fusion protein containing a sequence corresponding to amino acids 310-419 of human GPR151 (NP_919227.2).

Synonyms

GPCR; PGR7; GALR4; GALRL; GPCR-2037; GPR151

Contact

☎ | 400-999-6126

✉ | cn.market@abclonal.com.cn

🌐 | www.abclonal.com.cn

Product Information

Source

Rabbit

Isotype

IgG

Purification

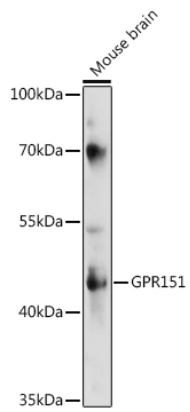
Affinity purification

Storage

Store at -20°C. Avoid freeze / thaw cycles.

Buffer: PBS with 0.01% thimerosal, 50% glycerol, pH7.3.

Validation Data



Western blot analysis of various lysates using GPR151 Rabbit pAb (A16165) at 1:1000 dilution.
Secondary antibody: HRP Goat Anti-Rabbit IgG (H+L) (AS014) at 1:10000 dilution.
Lysates/proteins: 25 μ g per lane.
Blocking buffer: 3% nonfat dry milk in TBST.
Detection: ECL Enhanced Kit (RM00021).
Exposure time: 300s.