

KBTBD3 Rabbit pAb

Catalog No.: A16169

Basic Information

Observed MW

71kDa

Calculated MW

70kDa

Category

Primary antibody

Applications

WB,ELISA

Cross-Reactivity

Human, Mouse, Rat

Background

KBTBD3 (Kelch Repeat And BTB Domain Containing 3) is a Protein Coding gene. Diseases associated with KBTBD3 include Schizotypal Personality Disorder. An important paralog of this gene is KLHL24.

Recommended Dilutions

WB 1:500 - 1:2000

ELISA Recommended starting concentration is 1 µg/mL. Please optimize the concentration based on your specific assay requirements.

Immunogen Information

Gene ID

143879

Swiss Prot

Q8NAB2

Immunogen

Recombinant protein (or fragment). This information is considered to be commercially sensitive.

Synonyms

BKLHD3; KBTBD3

Contact

 | 400-999-6126

 | cn.market@abclonal.com.cn

 | www.abclonal.com.cn

Product Information

Source

Rabbit

Isotype

IgG

Purification

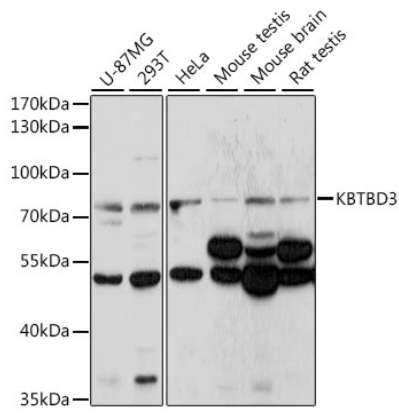
Affinity purification

Storage

Store at -20°C. Avoid freeze / thaw cycles.

Buffer: PBS with 0.01% thimerosal, 50% glycerol, pH7.3.

Validation Data



Western blot analysis of various lysates using KBTBD3 Rabbit pAb (A16169) at 1:1000 dilution.
Secondary antibody: HRP-conjugated Goat anti-Rabbit IgG (H+L) (AS014) at 1:10000 dilution.
Lysates/proteins: 25µg per lane.
Blocking buffer: 3% nonfat dry milk in TBST.
Detection: ECL Basic Kit (RM00020).
Exposure time: 30s.