

SLC5A12 Rabbit pAb

Catalog No.: A16177

Basic Information

Observed MW

67kDa

Calculated MW

68kDa

Category

Primary antibody

Applications

ELISA, WB

Cross-Reactivity

Human

Background

Normal blood lactate is maintained at about 1.5 mM, and little filtered lactate is excreted in urine. Reabsorption of lactate is mediated by the low-affinity Na(+)-coupled lactate transporter SLC5A12 in the initial part of the proximal tubule and by the high-affinity Na(+)-coupled lactate transporter SLC5A8 (MIM 608044) in the distal proximal tubule (Gopal et al., 2007 [PubMed 17692818]).

Recommended Dilutions

WB 1:500 - 1:2000

Immunogen Information

Gene ID

159963

Swiss Prot

Q1EHB4

Immunogen

Recombinant fusion protein containing a sequence corresponding to amino acids 200-280 of human SLC5A12 (NP_848593.2).

Synonyms

SMCT2; SLC5A12

Contact

 | 400-999-6126

 | cn.market@abclonal.com.cn

 | www.abclonal.com.cn

Product Information

Source

Rabbit

Isotype

IgG

Purification

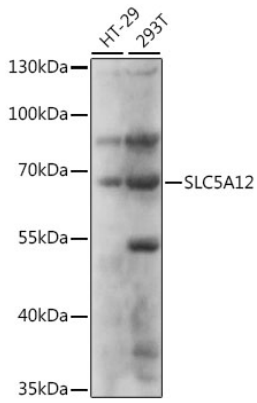
Affinity purification

Storage

Store at -20°C. Avoid freeze / thaw cycles.

Buffer: PBS with 0.01% thimerosal, 50% glycerol, pH7.3.

Validation Data



Western blot analysis of various lysates using SLC5A12 Rabbit pAb (A16177) at 1:1000 dilution.
Secondary antibody: HRP Goat Anti-Rabbit IgG (H+L) (AS014) at 1:10000 dilution.
Lysates/proteins: 25µg per lane.
Blocking buffer: 3% nonfat dry milk in TBST.
Detection: ECL Basic Kit (RM00020).
Exposure time: 5s.