

CCDC110 Rabbit pAb

Catalog No.: A16179

Basic Information

Observed MW

97kDa

Calculated MW

97kDa

Category

Primary antibody

Applications

ELISA, WB

Cross-Reactivity

Mouse, Rat

Background

Predicted to be located in nucleus. Predicted to be active in cytoskeleton.

Recommended Dilutions

WB 1:500 - 1:2000

Immunogen Information

Gene ID

256309

Swiss Prot

Q8TBZ0

Immunogen

Recombinant fusion protein containing a sequence corresponding to amino acids 1-300 of human CCDC110 (NP_689988.1).

Synonyms

CT52; KMHN1; KM-HN-1; CCDC110

Contact

☎ | 400-999-6126

✉ | cn.market@abclonal.com.cn

🌐 | www.abclonal.com.cn

Product Information

Source

Rabbit

Isotype

IgG

Purification

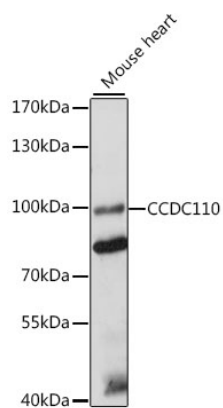
Affinity purification

Storage

Store at -20°C. Avoid freeze / thaw cycles.

Buffer: PBS with 0.01% thimerosal, 50% glycerol, pH7.3.

Validation Data



Western blot analysis of lysates from mouse heart, using CCDC110 Rabbit pAb (A16179) at 1:1000 dilution.

Secondary antibody: HRP Goat Anti-Rabbit IgG (H+L) (AS014) at 1:10000 dilution.

Lysates/proteins: 25µg per lane.

Blocking buffer: 3% nonfat dry milk in TBST.

Detection: ECL Basic Kit (RM00020).

Exposure time: 10s.