

YIPF7 Rabbit pAb

Catalog No.: A16180

Basic Information

Observed MW

31kDa

Calculated MW

31kDa

Category

Primary antibody

Applications

ELISA, WB

Cross-Reactivity

Rat

Background

Predicted to be involved in endoplasmic reticulum to Golgi vesicle-mediated transport and vesicle fusion with Golgi apparatus. Predicted to be located in endoplasmic reticulum membrane. Predicted to be integral component of membrane. Predicted to be active in trans-Golgi network.

Recommended Dilutions

WB 1:500 - 1:2000

Immunogen Information

Gene ID

285525

Swiss Prot

Q8N8F6

Immunogen

Recombinant fusion protein containing a sequence corresponding to amino acids 1-80 of human YIPF7 (NP_872398.2).

Synonyms

FinGER9; YIPF7

Contact

 | 400-999-6126

 | cn.market@abclonal.com.cn

 | www.abclonal.com.cn

Product Information

Source

Rabbit

Isotype

IgG

Purification

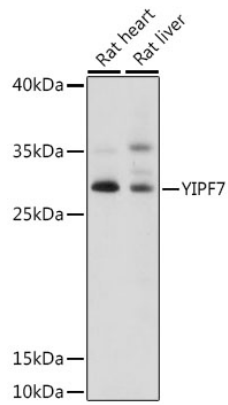
Affinity purification

Storage

Store at -20°C. Avoid freeze / thaw cycles.

Buffer: PBS with 0.01% thimerosal, 50% glycerol, pH7.3.

Validation Data



Western blot analysis of various lysates using YIPF7 Rabbit pAb (A16180) at 1:1000 dilution.
Secondary antibody: HRP Goat Anti-Rabbit IgG (H+L) (AS014) at 1:10000 dilution.
Lysates/proteins: 25µg per lane.
Blocking buffer: 3% nonfat dry milk in TBST.
Detection: ECL Basic Kit (RM00020).
Exposure time: 15s.