

# SERPINA9 Rabbit pAb

Catalog No.: A16182

## Basic Information

### Observed MW

46kDa

### Calculated MW

47kDa

### Category

Primary antibody

### Applications

ELISA, WB

### Cross-Reactivity

Human

## Background

Enables serine-type endopeptidase inhibitor activity. Predicted to be involved in negative regulation of endopeptidase activity. Predicted to be located in cytoplasm and membrane. Predicted to be active in extracellular space.

## Recommended Dilutions

WB 1:500 - 1:2000

## Immunogen Information

### Gene ID

327657

### Swiss Prot

Q86WD7

### Immunogen

Recombinant fusion protein containing a sequence corresponding to amino acids 110-210 of human SERPINA9 (NP\_783866.2).

### Synonyms

GCET1; SERPINA11; SERPINA11b; SERPINA9

## Contact

☎ | 400-999-6126

✉ | [cn.market@abclonal.com.cn](mailto:cn.market@abclonal.com.cn)

🌐 | [www.abclonal.com.cn](http://www.abclonal.com.cn)

## Product Information

### Source

Rabbit

### Isotype

IgG

### Purification

Affinity purification

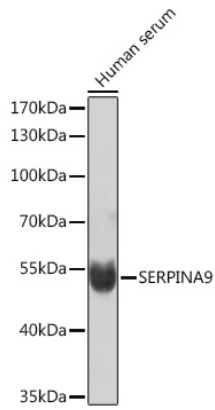
### Storage

Store at -20°C. Avoid freeze / thaw cycles.

Buffer: PBS with 0.01% thimerosal, 50% glycerol, pH7.3.

## Validation Data

---



Western blot analysis of lysates from Human serum, using SERPINA9 Rabbit pAb (A16182) at 1:1000 dilution.

Secondary antibody: HRP Goat Anti-Rabbit IgG (H+L) (AS014) at 1:10000 dilution.

Lysates/proteins: 25µg per lane.

Blocking buffer: 3% nonfat dry milk in TBST.

Detection: ECL Basic Kit (RM00020).

Exposure time: 10s.