

# GET4 Rabbit pAb

Catalog No.: A16190

## Basic Information

### Observed MW

36kDa

### Calculated MW

37kDa

### Category

Primary antibody

### Applications

ELISA, WB

### Cross-Reactivity

Human, Mouse, Rat

## Background

Enables chaperone binding activity. Involved in cytoplasmic sequestering of protein; maintenance of unfolded protein involved in ERAD pathway; and tail-anchored membrane protein insertion into ER membrane. Located in chromosome; cytosol; and nuclear lumen. Part of BAT3 complex.

## Recommended Dilutions

WB 1:500 - 1:2000

## Immunogen Information

### Gene ID

51608

### Swiss Prot

Q7L5D6

### Immunogen

Recombinant fusion protein containing a sequence corresponding to amino acids 1-327 of human GET4 (NP\_057033.2).

### Synonyms

CEE; CDG2Y; TRC35; CGI-20; C7orf20; GET4

## Contact

☎ | 400-999-6126

✉ | [cn.market@abclonal.com.cn](mailto:cn.market@abclonal.com.cn)

🌐 | [www.abclonal.com.cn](http://www.abclonal.com.cn)

## Product Information

### Source

Rabbit

### Isotype

IgG

### Purification

Affinity purification

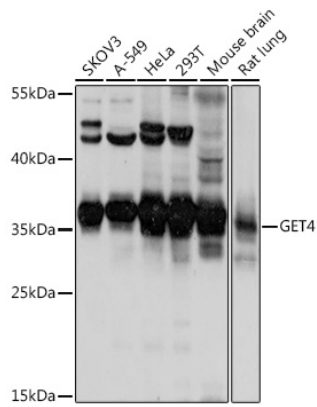
### Storage

Store at -20°C. Avoid freeze / thaw cycles.

Buffer: PBS with 0.01% thimerosal, 50% glycerol, pH7.3.

## Validation Data

---



Western blot analysis of various lysates using GET4 Rabbit pAb (A16190) at 1:1000 dilution.  
Secondary antibody: HRP Goat Anti-Rabbit IgG (H+L) (AS014) at 1:10000 dilution.  
Lysates/proteins: 25µg per lane.  
Blocking buffer: 3% nonfat dry milk in TBST.  
Detection: ECL Basic Kit (RM00020).  
Exposure time: 3s.